

ADMS-7

(Ver. 1.1 or later)
DG-ID and DP-ID Feature Compatible

Operation Manual

The ADMS-7 software provides convenient editing of the FTM-400XDR/XDE/DR/DE memory channel frequencies, channel information and alpha tags, using a personal computer. Also the transceiver parameters and the setup menu items may be edited and configured easily from the computer keyboard.

Attention !

The ADMS-7 software (Ver. 1.1 or later) can only be used with FTM-400XDR/XDE MAIN firmware version "Ver. 4.00" or later and FTM-400DR/DE MAIN firmware version "Ver. 3.00" or later.

TABLE OF CONTENTS

Introduction.....	2	Setting the Template Items	21
System Requirements	2	Memories	21
Operating system (OS)	2	Band A / Band B Memories	21
CPU	2	Band A / Band B PMS Memories.....	22
RAM (system memory)	2	Frequency	22
HDD (Hard Disk)	2	Offset Frequency	22
Necessary PC peripheral interfaces	2	Offset Direction	22
Cables.....	2	MODE	23
Getting Started.....	3	Name	23
Before using the ADMS-7		Tone Mode.....	23
FTM-400XDR/XDE/DR/DE Programmer ...	5	CTCSS.....	23
Functions	6	DCS	23
File	6	User CTCSS	23
New	6	TX Power	23
Open	6	Skip	24
Exit	6	STEP	24
Save	6	Clock Shift.....	24
Save As.....	6	Comments	24
Import / Import with FT1D format	6	HOME Channel.....	25
Export / Export with FT1D format.....	7	Band A / Band B HOME	25
Print.....	8	Frequency	25
Close.....	8	Offset Frequency	25
Edit.....	8	Offset Direction	25
Undo	8	MODE	26
Cut	8	Name	26
Copy.....	8	Tone Mode.....	26
Paste.....	8	CTCSS Frequency.....	26
Find	9	DCS	26
Find Next.....	9	User CTCSS	26
Go to Channel	9	TX Power	26
Insert Channel.....	9	Step	26
Delete Channel	10	Clock Shift.....	26
Clear Channel	10	Comments	26
Move Up.....	10	VFO	27
Move Down	10	Band A / Band B VFO.....	27
Add Frequency Range	10	Frequency	27
Sort	11	Offset Frequency	27
Communications	12	Offset Direction	27
Get Data from FTM-400D	12	MODE	28
Send Data to FTM-400D	13	Tone Mode.....	28
Get Data From SD Card	13	CTCSS Frequency.....	28
Send Data to SD Card	14	DCS	28
Com Port Setup	15	User CTCSS	28
Settings.....	16	TX Power	28
Common	16	Step	28
GM WIREX-X.....	17	Clock Shift.....	28
APRS	18	Comments	28
APRS Beacon	19	Troubleshooting	29
MEMORY.....	19	Contact YAESU Technical Support	29
Tool Bar	19		
Status Bar	19		
Window	20		

Introduction

The ADMS-7 programming software uses a Personal Computer to quickly enter and save the FTM-400XDR/XDE/DR/DE memory channel frequencies and data. Also the many menu settings may be adapted for individual operating preferences. All of the information is saved, and then with the use of the SCU-20 programming cable and ADMS-7 programmer software, it may be downloaded (cloned) to the FTM-400XDR/XDE/DR/DE transceiver.

System Requirements

In order to use this program, a personal computer (PC) with one of the following Windows operating systems, and a serial data connection cable are required.

Operating system (OS)

Any one of the following operating system environments

Microsoft Windows® 10 (32 bit/64 bit)

Microsoft Windows® 8.1 (32 bit/64 bit)

Microsoft Windows® 8 (32 bit/64 bit)

Microsoft Windows® 7 (32 bit/64 bit, Service Pack 1 or later)

CPU

The performance of the CPU must be able to satisfy the operating system requirements.

RAM (system memory)

The capacity of the RAM (system memory) must be more than sufficient to satisfy the operating system requirements.

HDD (Hard Disk)

The capacity of the HDD must be more than sufficient to satisfy the operating system requirements.

In addition to the memory space required to run the operating system, about 50 MB or more of additional memory space is required to run the program.

Necessary PC peripheral interfaces

USB interface (USB Port) or Serial Port (RS-232C)

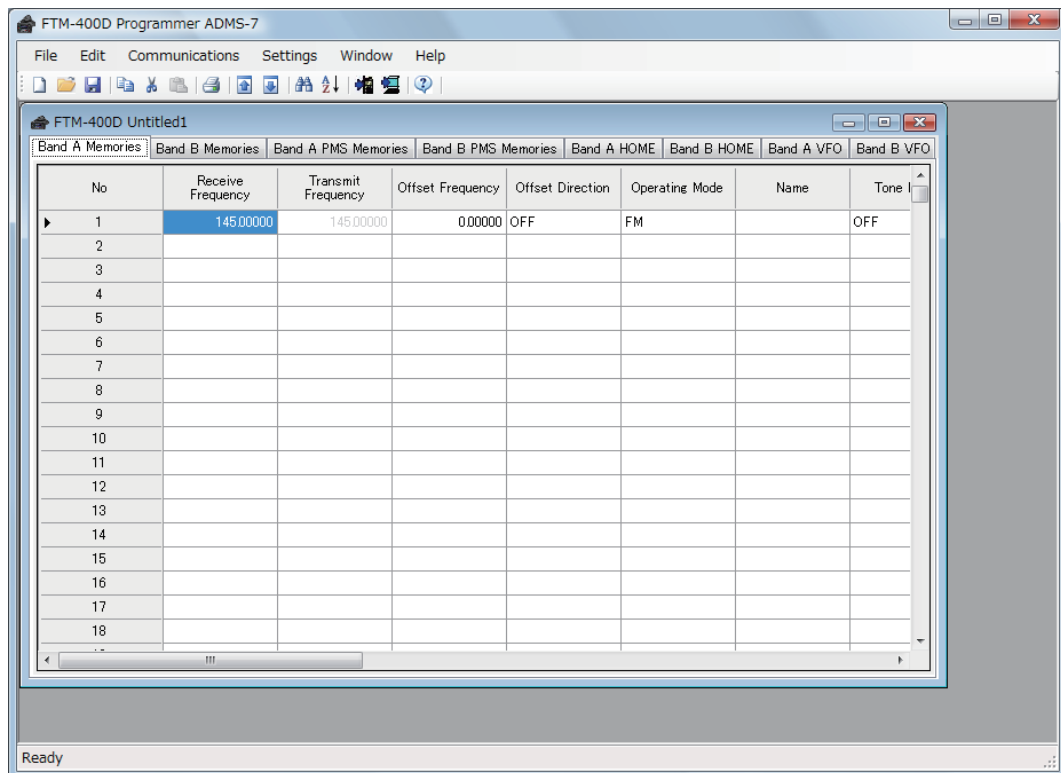
Cables

PC connection cable SCU-20 or Data cable CT-163 or CT-165

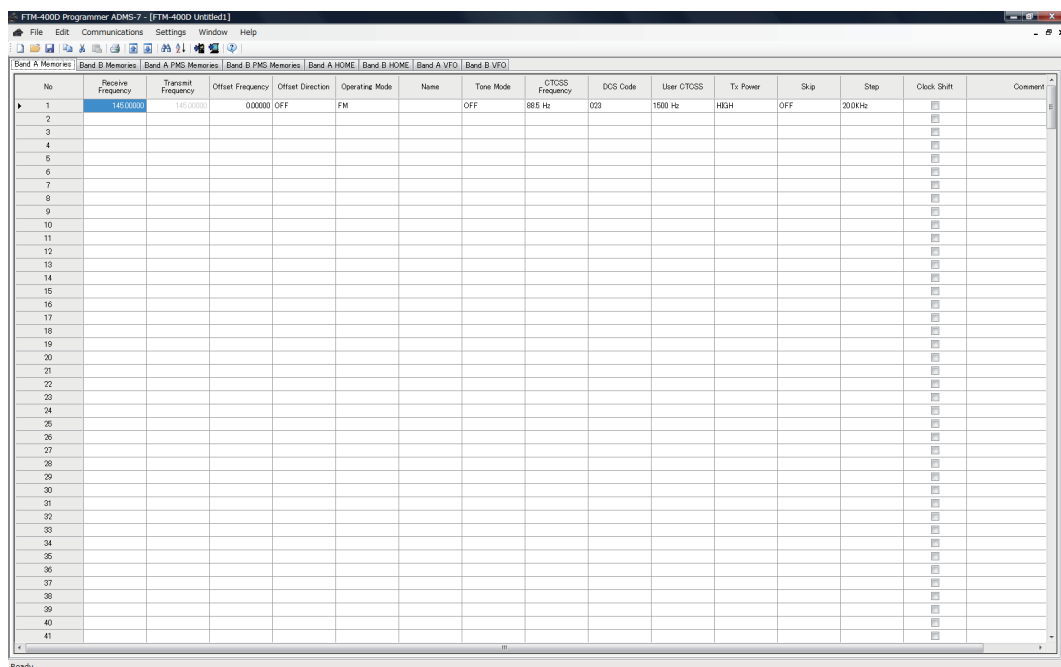
* When using the SCU-20 data cable, install the SCU-20 driver software to the PC before attempting to update the firmware.

Getting Started

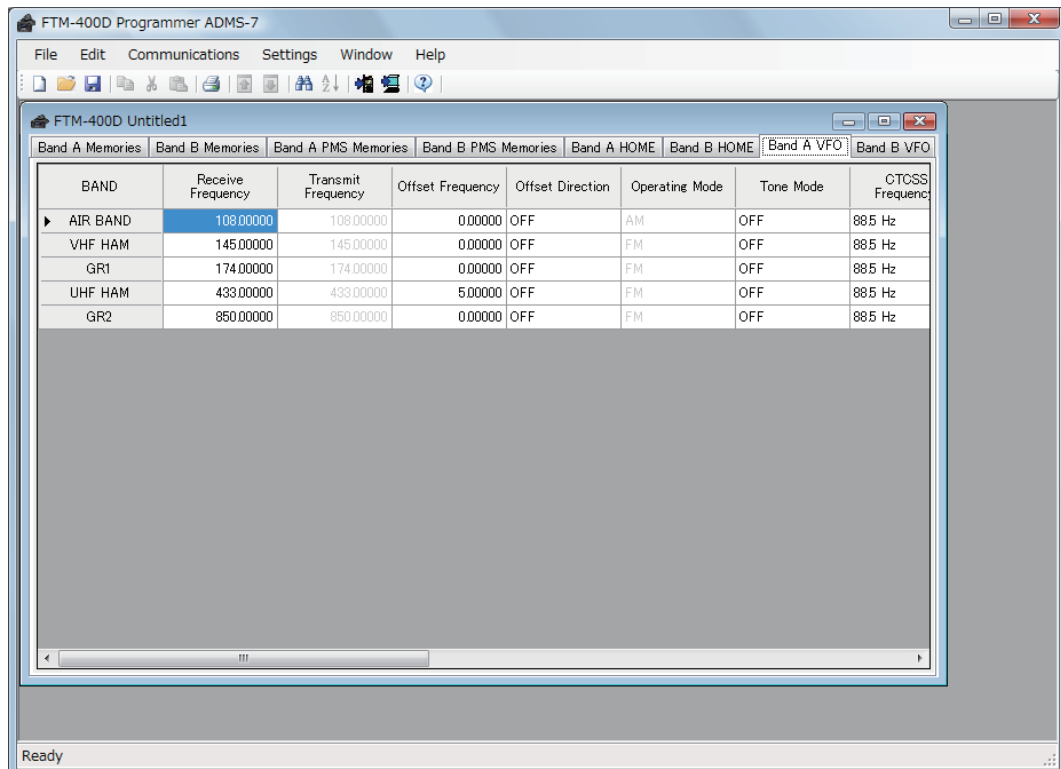
The Programmer software opens in a "reduced window" view.



Click the left mouse button on the "□" icon of the Title bar to enlarge a window.
The display window is shown in Full screen mode.

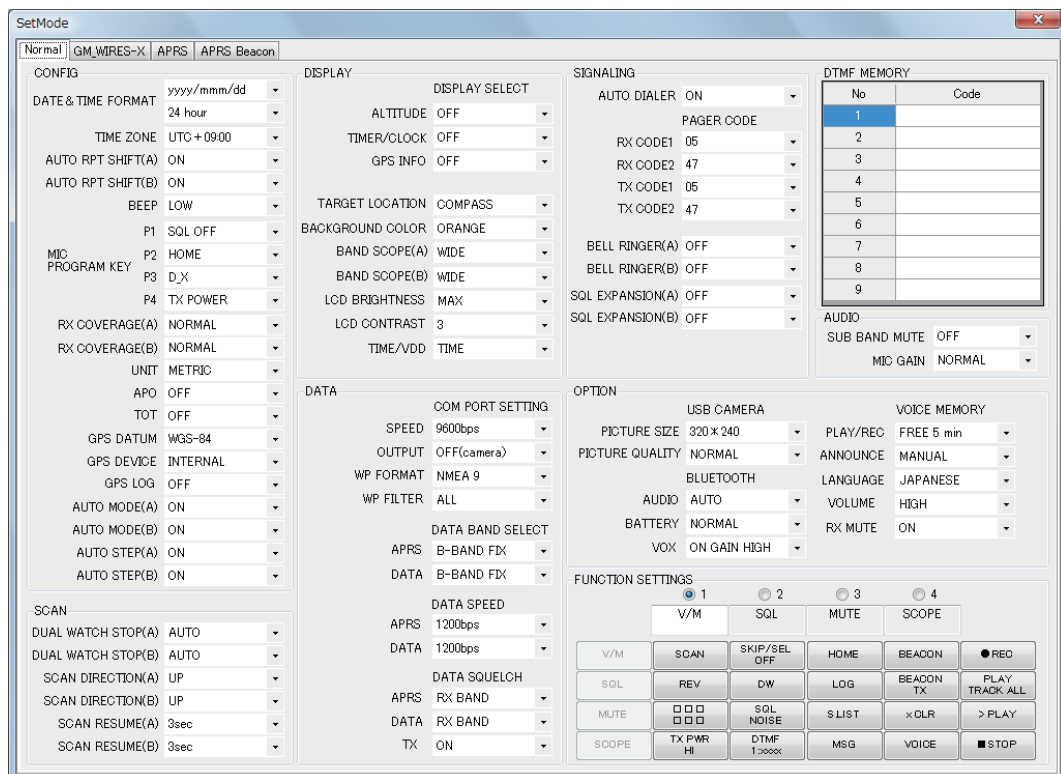


Click the left mouse button on each TAB in the title bar (PMS, VFOA, etc) to display help information.



The basic FTM-400XDR/XDE/DR/DE configuration information may be entered using the "Menu Setting" windows (templates).

Click the left mouse button on each item of the "Setting" menu to open the item "Menu Setting" window.

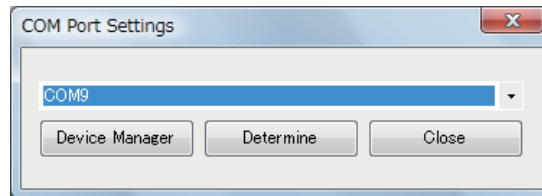


Before using the ADMS-7 FTM-400XDR/XDE/DR/DE Programmer

Select the communication port which is connected to the FTM-400XDR/XDE/DR/DE.

Click the left mouse button on the "ComPort Setup" item in the "Communications" menu to open the "Comm Port Setup" window.

Click the left mouse button on the "▼" button to display the ComPort List, and then click the left mouse button on the communication port which is connected to the FTM-400XDR/XDE/DR/DE.



If you do not know which COM Port is connected to the FTM-400XDR/XDE/DR/DE, open the Personal Computer device manager and select the COM Port which is displayed "Prolific USB-to-Serial Comm Port (SCU-20)". If the USB-to Serial device is not displayed on the Com port list, install the device driver to the PC correctly. After correctly installing the SCU-20 drivers, if the COM Port number is not correct and the popup message "The port COMxx does not exist" is displayed click OK. Open [Device Manager] to find the correct COM Port number. Then choose the correct COM Port number from the list, or type the correct COM Port number. Then click the [Determine] box to save the setting.

Note: First, use the "Get Data from FTM-400D" command (Page 12) to upload the setting data of the FTM-400D to the ADMS-7 programmer.

Functions

File

New

Open a new configuration file from the disk drive.

Click the left mouse button on the "New" parameter in the "File" menu to open the ADMS-7 FTM-400XDR/XDE/DR/DE default configuration file.

Open

Open a previously-saved configuration file from the disk.

Click the left mouse button on the "Open" parameter in the "File" menu, a pop-up window appears which shows all the saved files in the specified path. The currently open folder is saved and shown in the top box, and the name of the current file is in the bottom box.

Double click the left mouse button on the desired file to open it in a new tab on the PC screen.

Exit

Exit the program and close the window.

If the present configuration has not been saved to disk, you will be asked to confirm whether or not you wish to save it.

Save

Save the programming session to the disk with the same name and directory.

Click the left mouse button on the "Save" parameter in the "File" menu, a caution message will appear.

If you agree to over-write the current file, click the left mouse button on the [OK] box.

Save As

Save the programming session to the disk with a new name.

Click the left mouse button on the "Save As" parameter in the "File" menu, a pop-up window will appear which displays all the current files saved to the specified path.

To save the programming session with a new name, type the new file name in the bottom box, then click the left mouse button on the [OK] box.

Import / Import with FT1D format

You may create an ADMS-7 data file using a spreadsheet such as Microsoft Excel.

To create a data file for the import of data, save the spreadsheet in a "CSV" file format, this separates the template file data with commas.

A spreadsheet may be easily created by exporting the template data in the "CSV" format using the ADMS-7 "Export" command. After the "CSV" data has been edited the spreadsheet may be imported back into the ADMS-7 Programmer. (See "Export" command for details).

A separate import file is needed for each template.

For example, to import the VFO and memory templates; first, click the "VFO" tab to display the VFO template, then import the VFO (CSV) file; next, click the "Memories" tab to display the "Memory" template; then import the Memory (CSV) file.

Do not edit the "Check" line of the right side end of the completed CSV file.

Microsoft Excel - USER1

File Edit View Insert Format Tools Data Window Help

Type a question for help

A1 145

	A	B	C	D	E	F	G	H	I	J	K	L	M	N
1	1	145	145	0	OFF	FM	VHF Ham	OFF	88.5 Hz	23 1600 Hz	HIGH	OFF	20.0KHz	
2	2	433	433	0	OFF	FM	UHF Ham	OFF	67.0 Hz	23 1600 Hz	HIGH	OFF	25.0KHz	
3	3	118.1	118.1	0	OFF	AM	Air Band	0	67.0 Hz	23 1600 Hz	HIGH	OFF	25.0KHz	
4	4	119.1	119.1	0	OFF	AM	Air Band	0	67.0 Hz	23 1600 Hz	HIGH	OFF	25.0KHz	
5	5													
6	6													
7	7													
8	8													
9	9													
10	10													
11	11													
12	12													
13	13													
14	14													
15	15													
16	16													
17	17													
18	18													
19	19													
20	20													
21	21													
22	22													
23	23													
24	24													
25	25													
26	26													
27	27													
28	28													
29	29													
30	30													
31	31													
32	32													
33	33													

Ready

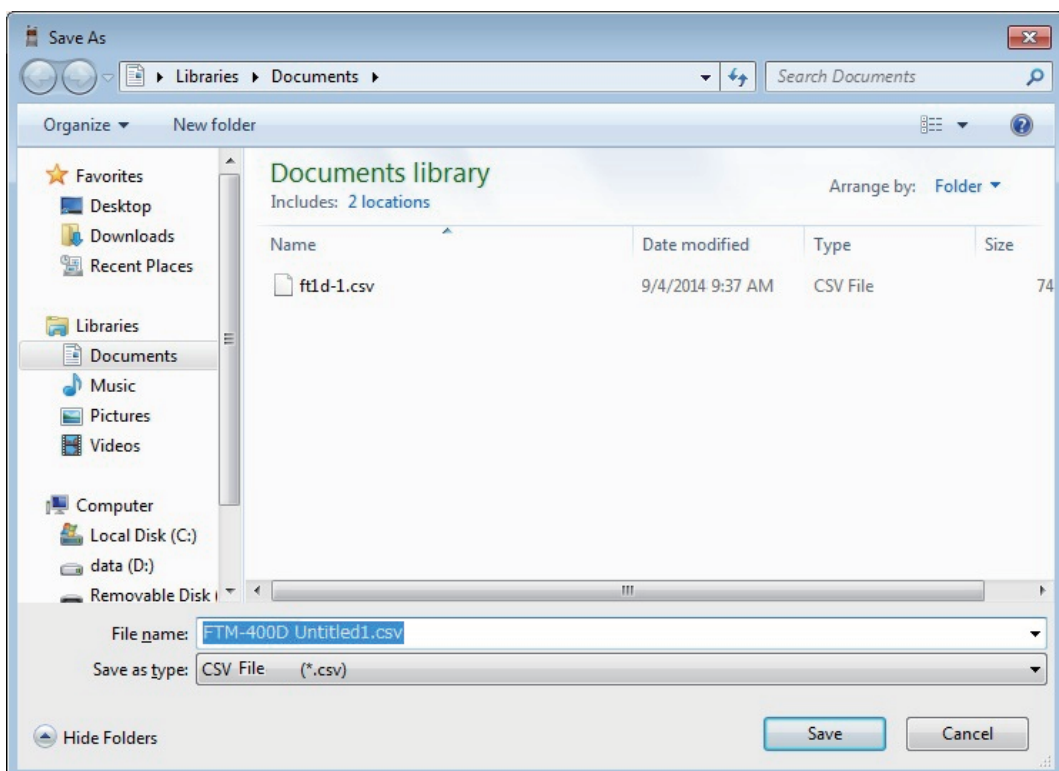
CAPS NUM

Export / Export with FT1D format

Exports the data file in the "CSV" format.

Click the left mouse button on the "Export" parameter in the "File" menu, a pop-up window will appear which displays all the current files saved to the specified path.

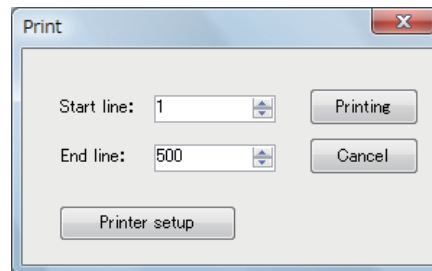
Type a file name in the bottom box, then click the left mouse button on the [OK] box.



Print

Print the current template file data to hard copy.

Click the left mouse button on the "Print" parameter in the "File" menu, the "Print" window will open to enable printing. Set the start line and the end line of the data you want to print, then click the left mouse button on the "Print" button to start printing.

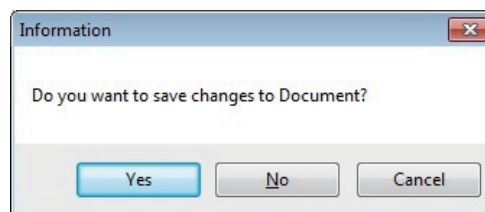


To change the detailed printer settings, go to the Printer properties by clicking the left mouse button on the "Printer setup" button.

Close

Exit ADMS-7 programmer.

Click the left mouse button on the "Close" parameter in the "File" menu, the pop-up window will open. Exit the ADMS-7 programmer according to the instructions on the window.



Edit

Undo

Undo the edited data.

Click the left mouse button on the "Undo" parameter in the "Edit" menu to undo the edited data.

Cut

Cut the data of the selected area.

Click the left mouse button on the "Cut" parameter in the "Edit" menu to delete the data of the selected area.

Copy

Copy the data of the selected area.

Click the left mouse button on the "Copy" parameter in the "Edit" menu to copy the selected data to the clipboard.

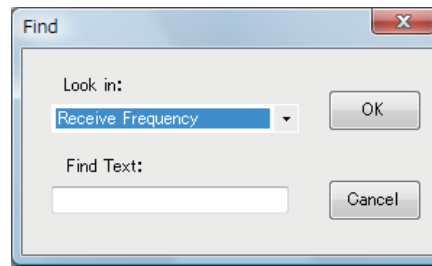
Paste

Paste the clipboard data to the selected area.

Click the left mouse button on the "Paste" parameter in the "Edit" menu to paste the clipboard data to the selected area.

Find

Find text or data.



Click the left mouse button on the "Find" parameter in the "Edit" menu, the "Find" window will open. Enter the text or data you wish to find, and then click the left mouse button on the [OK] button. The cursor will move to the text or data in the template.

Find Next

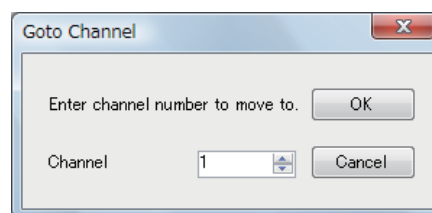
Find the next instance of the data.

Click the left mouse button on the "Find Next" parameter in the "Edit" menu, to move the cursor to the next instance of the data.

Go to Channel

Move the cursor to the desired channel.

Click the left mouse button on the "Goto Channel" parameter in the "Edit" menu, a pop-up window will open.



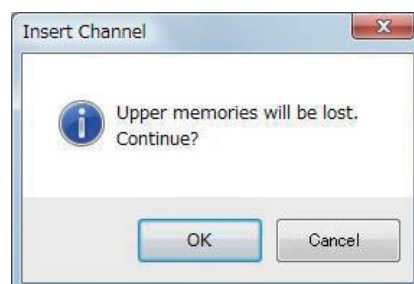
Enter the channel number you wish to find, and then click the left mouse button on the [OK] button.

Insert Channel

Insert the channel data.

Click the left mouse button on the "Insert Channel" parameter in the "Edit" menu to create a blank new channel data row under a current cursor.

When channel "500" contains data, the confirmation message, "Upper memories will be lost. Continue?" will appear. If you agree, click the left mouse button on the [OK] button.



Delete Channel

Delete the current channel data.

Click the left mouse button on the "Delete Channel" parameter in the "Edit" menu to delete the current channel data. The channels located below the current cursor move up one row.

Clear Channel

Clear the current channel data.

Click the left mouse button on the "Clear Channel" parameter in the "Edit" menu to clear the current channel data. The data will be cleared from the currently selected channel row.

Move Up

Move the current channel data up one row.

Click the left mouse button on the "Move Up" parameter in the "Edit" menu, the currently selected channel data moves upward one row.

Move Down

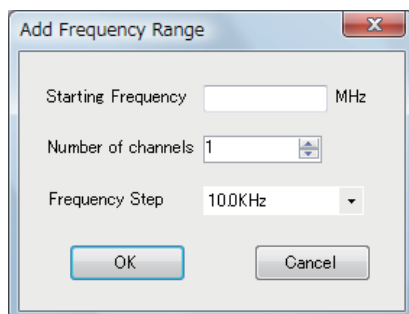
Move the current channel data down one row.

Click the left mouse button on the "Move Down" parameter in the "Edit" menu, the currently selected channel data moves downward one row.

Add Frequency Range

New channels may be created in designated frequency steps from the starting frequency.

Click the left mouse button on the "Add Frequency Range" parameter in the "Edit" menu, the "Add Frequency List" window will open.



Starting Frequency: Enter the lower frequency

Number of Channel: Enter the number of channels

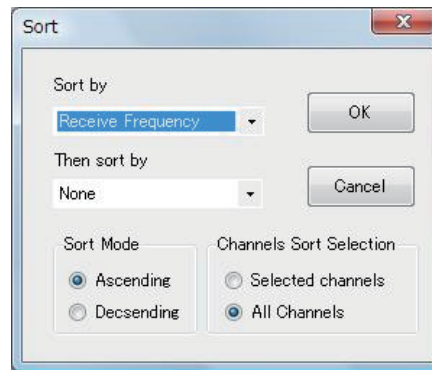
Frequency Step: Enter the desire frequency step

Click the left mouse button on the [OK] button to create the frequencies according to the above instructions.

*: 8.33 kHz step is available only when receiving on the Air band (108-136.99166 MHz).

Sort

Click the left mouse button on the "Sort" parameter in the "Edit" menu, the "Sort" window will open.



Sort by:	Selects the first parameter of the sorting
Then sort by:	Selects the second parameter of the sorting
Sort Mode:	Selects the sorting order
Channels Sort Selection:	Selects the sorting range

Click the left mouse button on the [OK] button to initiate the sorting according to the above instructions.

The data may be restored to the previous order by using the "Undo" command.

Communications

Get Data from FTM-400D

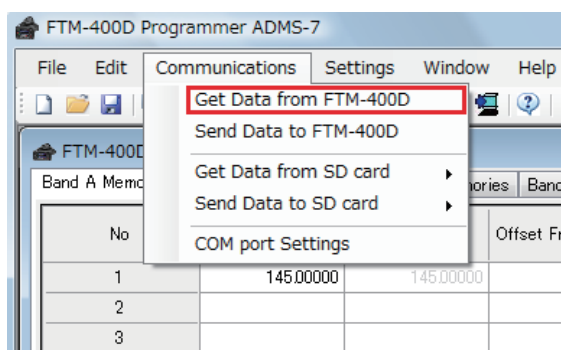
This command transfers the settings data of the FTM-400XDR/XDE/DR/DE to the ADMS-7 programmer.

Note: First, use the "Get Data from FTM-400D" command to upload the setting data of the FTM-400D to the ADMS-7 programmer.

Click the left mouse button on the "Get Data from FTM-400XDR/XDE/DR/DE" parameter in the "Communication" menu, The "Instructions" window will open.

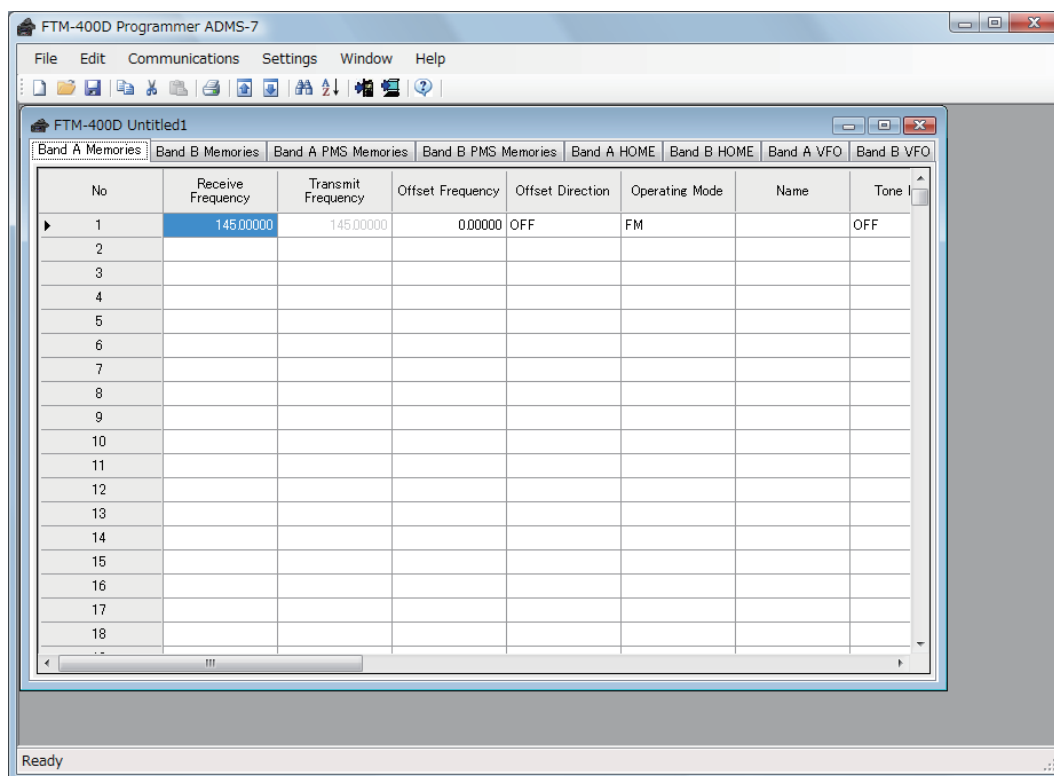
In order to use the ADMS-7 software to program an FTM-400XDR/XDE/DR/DE transceiver, first use the "Get Data" command to upload the configuration settings and data from the FTM-400XDR/XDE/DR/DE to the ADMS-7 programmer.

Click the left mouse button on the "Get Data from FTM-400D" parameter in the "Communication" menu, The "Instructions" window will open.



Connect the supplied SCU-20 programming cable between the FTM-400XDR/XDE/DR/DE and the Personnel Computer.

Upload the configuration settings and data from the FTM-400XDR/XDE/DR/DE to the ADMS-7 programmer according to the instructions in the window. When the data transfer is completed, the template screen received from the FTM-400XDR/XDE/DR/DE appears on the computer display. The memory channels and configuration menu data may be edited using the ADMS-7 software tools.

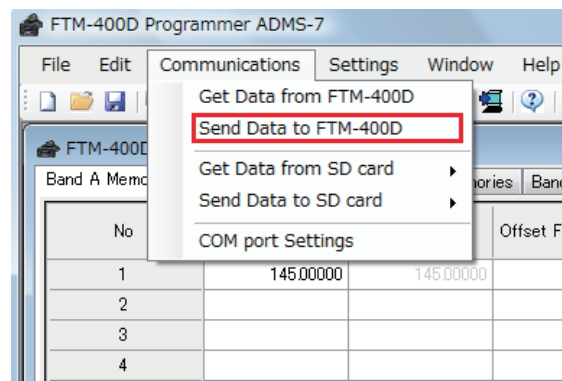


This template and configuration data may be saved to the computer disk drive, using the "Save" or "Save as" commands.

Send Data to FTM-400D

Note: First, use the "Get Data from FTM-400D" command to upload the setting data of the FTM-400D to the ADMS-7 programmer.

This command downloads the ADMS-7 data from the computer to the FTM-400XDR/XDE/DR/DE. Recall the previously-saved data using the "Open" command, and then click the left mouse button on the "Save Data to FTM-400D" parameter in the "Communication" menu. The "Instructions" window will open.



Connect the supplied SCU-20 programming cable between the FTM-400XDR/XDE/DR/DE and the computer.

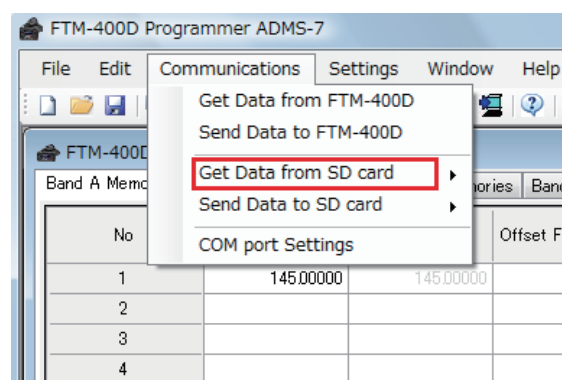
Download the ADMS-7 data from the computer to the FTM-400XDR/XDE/DR/DE according to the instructions in the window.

* Never disconnect the programming cable while data transmission is in progress.

Get Data From SD Card

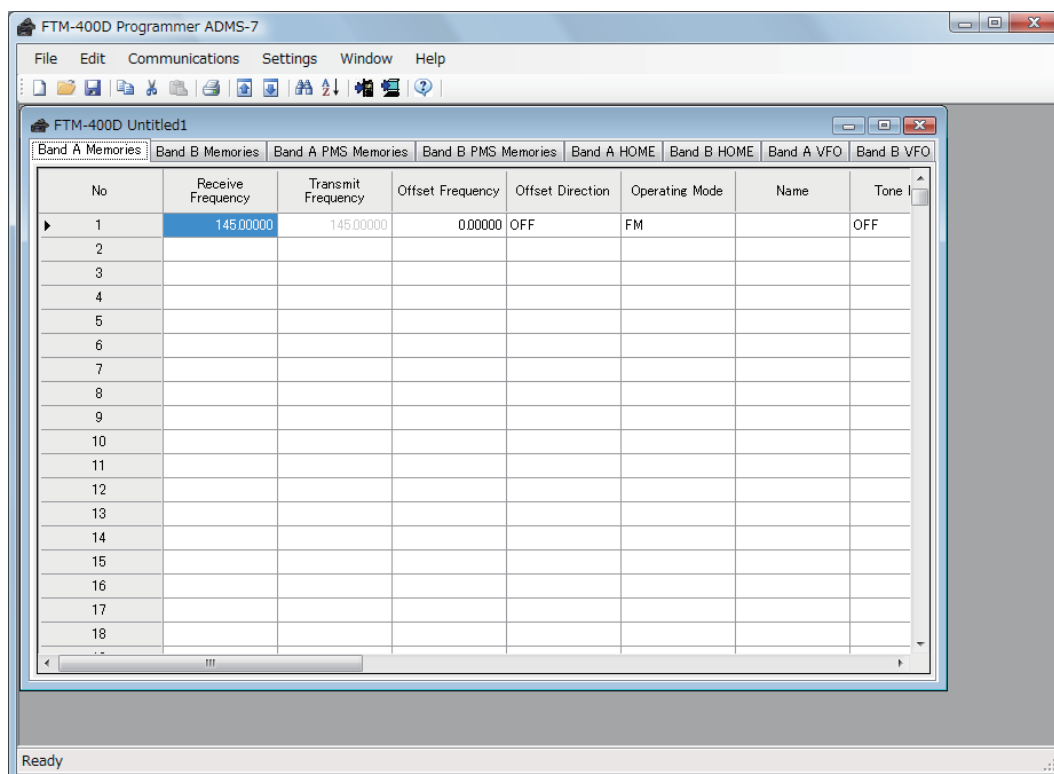
This command uploads the settings data from the SD Card to the ADMS-7 programmer.

Click the left mouse button on the "Get Data from SD Card" parameter in the "Communication" menu. The "Instructions" window will open.



Insert the SD Card with the saved data from FTM-400XDR/XDE/DR/DE to the computer.

Upload the settings data from the FTM-400XDR/XDE/DR/DE to the ADMS-7 by following the instructions in the window. When the data transfer is finished, the template screen which was received from the FTM-400XDR/XDE/DR/DE will be displayed on the computer screen. This data may be edited using the computer.



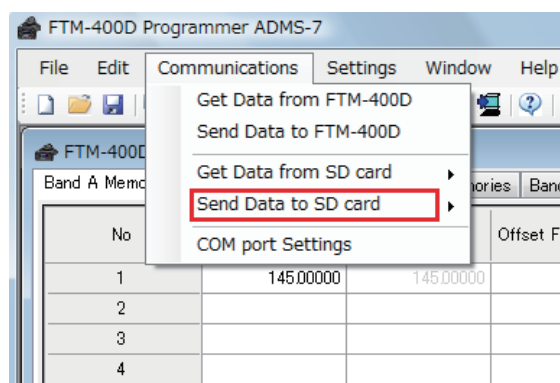
The template data may be stored to the computer files, using the "Save" or "Save as" commands.

Send Data to SD Card

Memories and settings from the ADMS-7 programmer may be transferred to the SD card.

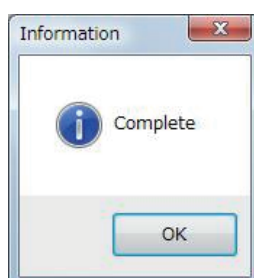
Select and open the desired data file that is to be loaded to the SD card.

Click on "Send Data to SD card" to open the data transmission procedure screen.



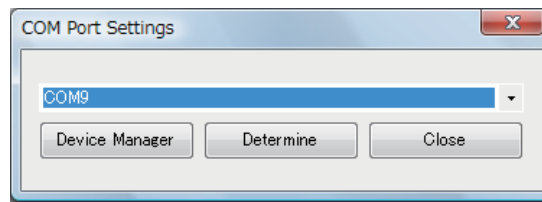
Load the SD card into the computer SD card slot.

Follow the instructions on the screen to copy the data to the SD card. When the data file transfer to the SD card is complete, a notice "Complete" is displayed on the computer screen.



Com Port Setup

Select the communication port which is connected to the FTM-400XDR/XDE/DR/DE.



When the Com port which is connected to the FTM-400XDR/XDE/DR/DE is not known, execute the device manager of the computer, then select the COM Port which is displayed "Prolific USB-to-Serial COM Port (SCU-20) Radio Cable". If the programming cable is not found in the COM Port list, install the device driver correctly.

After correctly installing the SCU-20 drivers, if the COM Port number is not correct and the popup message "The port COMxx does not exist" is displayed click OK. Open [Device Manager] to find the correct COM Port number. Then choose the correct COM Port number from the list, or type the correct COM Port number. Then click the [Determine] box to save the setting.

Settings

This page permits editing and storing the various common menu settings.

Click the left mouse button on the "Radio Menu Setting" parameter in the "Setting" menu to open the "Menu Setting" window.

This window has four pages; Common, GM WIRELESS-X, APRS, APRS Beacon.

Common

The SetMode window is divided into several sections for configuring the radio's settings:

- CONFIG:** Includes settings for DATE & TIME FORMAT (yyyy/mm/dd), TIME ZONE (UTC+0900), AUTO RPT SHIFT(A/B) (ON), BEEP (LOW), MIC PROGRAM KEY (P1: SQL OFF, P2: HOME, P3: D_X, P4: TX POWER), RX COVERAGE(A/B) (NORMAL), UNIT (METRIC), APO (OFF), TOT (OFF), GPS DATUM (WGS-84), GPS DEVICE (INTERNAL), GPS LOG (OFF), AUTO MODE(A/B) (ON), AUTO STEP(A/B) (ON), and SCAN settings (DUAL WATCH STOP(A/B) (AUTO), SCAN DIRECTION(A/B) (UP), SCAN RESUME(A/B) (3sec)).
- DISPLAY:** Includes DISPLAY SELECT (ALTITUDE, TIMER/CLOCK, GPS INFO, all OFF), TARGET LOCATION (COMPASS), BACKGROUND COLOR (ORANGE), BAND SCOPE(A/B) (WIDE), LCD BRIGHTNESS (MAX), LCD CONTRAST (3), and TIME/VDD (TIME).
- SIGNALING:** Includes AUTO DIALER (ON), PAGER CODE, RX CODE1/2 (05/47), TX CODE1/2 (05/47), BELL RINGER(A/B) (OFF), SQL EXPANSION(A/B) (OFF), and AUDIO settings (SUB BAND MUTE (OFF), MIC GAIN (NORMAL)).
- DTMF MEMORY:** A table with 9 rows for No. and Code.
- OPTION:** Includes USB CAMERA (PICTURE SIZE: 320x240, PICTURE QUALITY: NORMAL), VOICE MEMORY (PLAY/REC: FREE 5 min, ANNOUNCE: MANUAL, LANGUAGE: JAPANESE, VOLUME: HIGH, RX MUTE: ON), and BLUETOOTH (AUDIO: AUTO, BATTERY: NORMAL, VOX: ON GAIN HIGH).
- DATA:** Includes COM PORT SETTING (SPEED: 9600bps, OUTPUT: OFF(camera), WP FORMAT: NMEA 9, WP FILTER: ALL), DATA BAND SELECT (APRS: B-BAND FDX, DATA: B-BAND FDX), DATA SPEED (APRS: 1200bps, DATA: 1200bps), DATA SQUELCH (APRS: RX BAND, DATA: RX BAND, TX: ON), and FUNCTION SETTINGS (1: V/M, 2: SQL, 3: MUTE, 4: SCOPE).

To change the setting of each item in the window, click the left mouse button on the "▼" icon to show the dropdown settings list, and then click the desired selection in the list. Enter the DTMF MEMORY Codes by placing the cursor in the appropriate box and typing the desired data.

Example:

The dropdown menu for MIC PROGRAM KEY P1 shows the following options:

- SQL OFF
- OFF
- BAND SCOPE
- SCAN
- HOME
- DCS CODE
- TONE FREQ
- RPT SHIFT
- REVERSE
- TX POWER
- SQL OFF** (highlighted)
- T-CALL
- VOICE
- D_X
- S-LIST
- MSG
- REPLY
- M-EDIT
- PRF

Refer to the FTM-400XDR/XDE/DR/DE operating manual for the details of each function.

GM WIRES-X

The screenshot shows the 'SetMode' window with the 'GM_WIRES-X' tab selected. The window is divided into several sections:

- DIGITAL:**
 - AMS TX MODE: MANUAL
 - RX DG-ID: 00
 - TX DG-ID: 00
 - DIGITAL POPUP: 10sec
 - LOCATION SERVICE: ON
 - STANDBY BEEP: ON
- GM:**
 - RANGE RINGER: OFF
 - CALLSIGN(GM): YAESU
- WIRES-X:**
 - RPT/WIRES FREQ: MANUAL
 - PRESET FREQUENCY: 146.55000 MHz
 - SEARCH SETUP: HISTORY
 - DG-ID: AUTO
- CATEGORY:**

Category No	Category Name
C1	
C2	
C3	
C4	
C5	
- MESSAGE TEXT:**

No	Message
1	
2	
3	
4	
5	
6	
7	
8	
9	
10	

To change the setting of each item in the window, click the left mouse button on the "▼" icon to show the dropdown settings list, and then click the desired selection from the list. Enter the "CATEGORY" and "MESSAGE TEXT" information by placing the cursor in the appropriate box and typing the desired data.

Refer to the FTM-400XDR/XDE/DR/DE operating manual for the details of each function.

APRS

The screenshot shows the 'SetMode' window for APRS configuration. The 'APRS' tab is active. The interface includes various dropdown menus, checkboxes, and text input fields for configuring APRS settings such as beaconing, messaging, and position reporting.

To change the setting of each item in the window, click the left mouse button on the "▼" icon to show the dropdown settings list, and then click the desired selection from the list. Enter the APRS MSG information by placing the cursor in the appropriate box and typing the desired data.

Refer to the FTM-400XDR/XDE/DR/DE operating manual for the details of each function.

APRS Beacon

To change the setting of each item in the window, click the left mouse button on the "▼" icon to show the dropdown settings list, and then click the desired selection from the list. Enter the BEACON STATUS TEXT by placing the cursor in the appropriate box and typing the desired data.

MEMORY

When you have completed editing the settings of the Menu Setting window, click the left mouse button on the "X" icon at the upper right corner of the window. A confirmation window will open, click the left mouse button on the [OK] button to save the settings and close the window.

Refer to the FTM-400XDR/XDE/DR/DE operating manual for the details of each function.

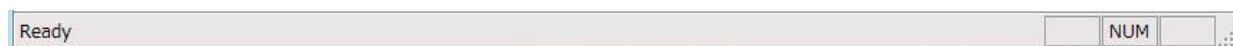
Tool Bar

Click the left mouse button on the "Toolbar" parameter in the "Setting" menu to display or hide the Toolbar, which includes buttons for some of the most common commands in the ADMS-7 programmer. A check mark appears next to the "Toolbar" parameter when the Toolbar is displayed.



Status Bar

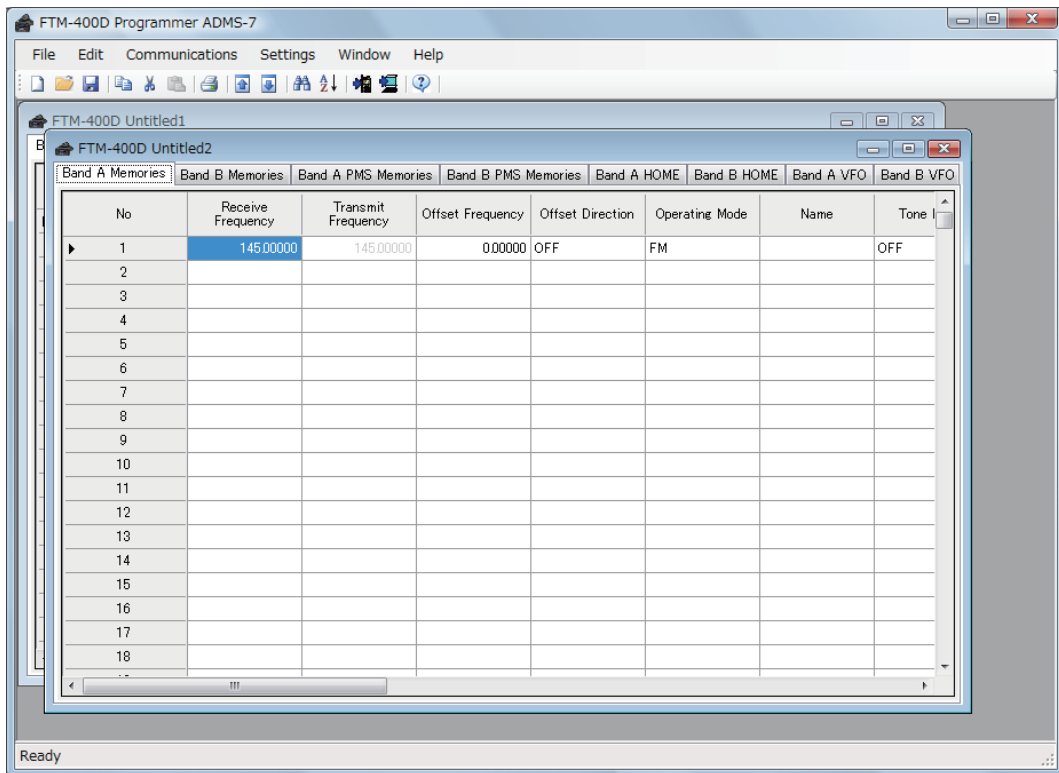
Click the left mouse button on the "Status Bar" parameter in the "Setting" menu to display or hide the Status Bar, which describes the action to be executed by the selected menu item or depressed toolbar button, and keyboard latch state. A check mark appears next to the "Status Bar" parameter when the Status Bar is displayed.



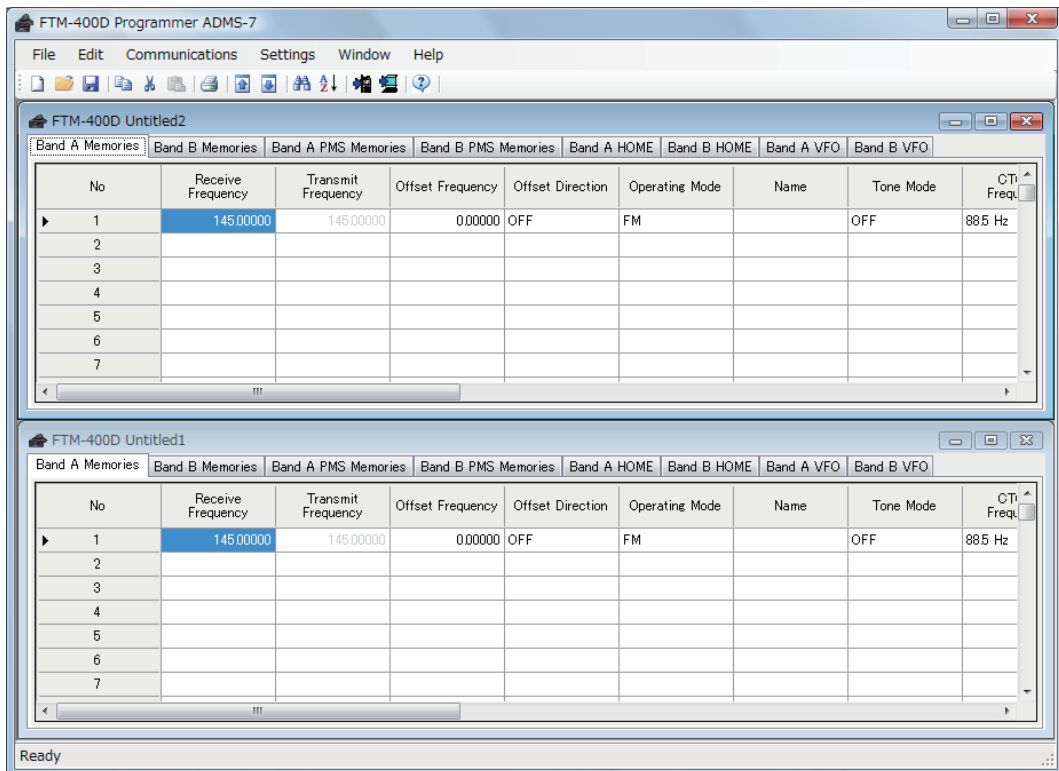
Window

This menu sets the operating window of the ADMS-7.

Click the left mouse button on the "Cascade" parameter in the "Window" menu to display multiple templates in cascade format.



Click the left mouse button on the "Tile" parameter in the "Window" menu to display multiple templates in tile format.



Setting the Template Items

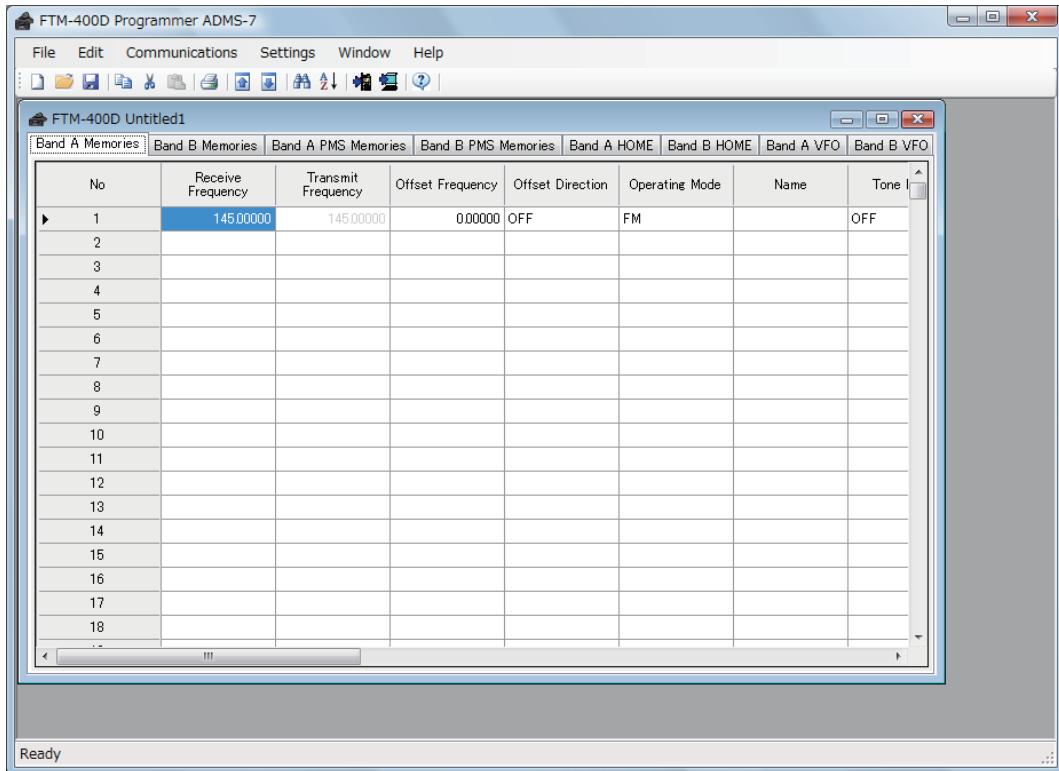
Memories

Band A Memories / Band B Memories / Band A PMS Memories / Band B PMS Memories

Band A / Band B Memories

Use this page to edit the memory channel data.

There are 500 memory channels available for each band.

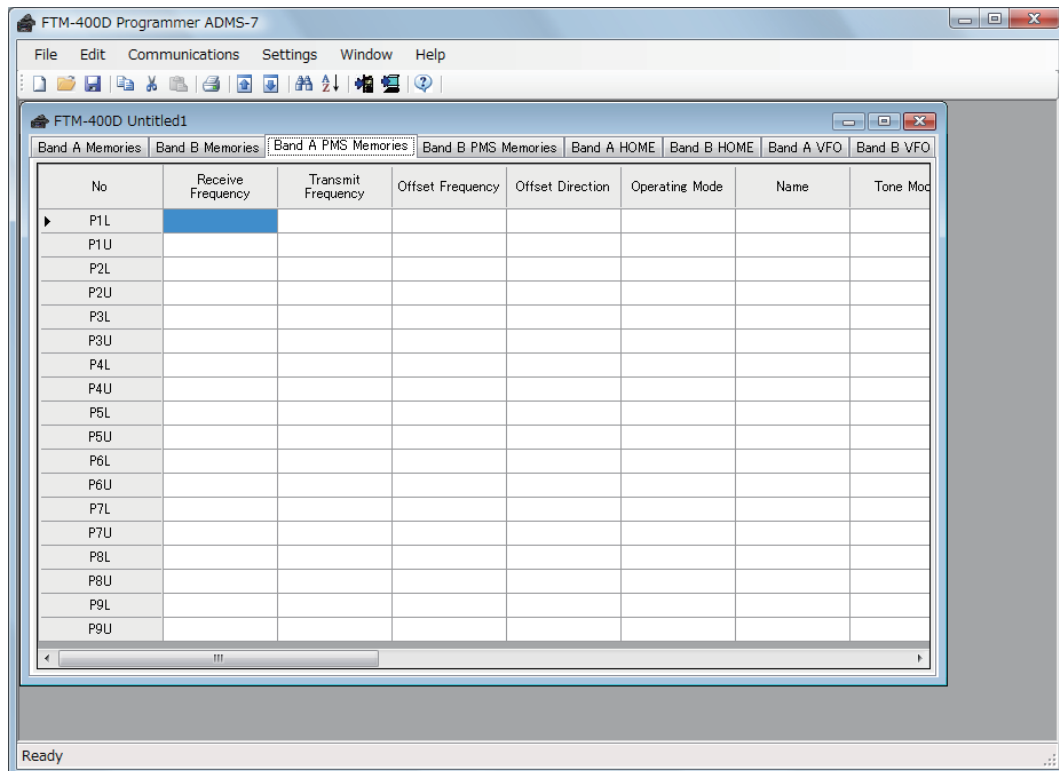


Band A / Band B PMS Memories

Use this page to edit the PMS (Programmable Memory Scan) memory channels.

There 18 PMS memory channels available to provide 9 pairs with upper and lower channels.

Store the lower band limit into the "L" channel, and store the upper band limit into the "U" channel.



Frequency

Enter the TX / RX frequency.

When entering a receive frequency, press the computer's [ENT] key to complete the various settings for this frequency, or press the [↓] key to move the cursor to the next channel frequency entry.

Offset Frequency

This item sets the offset frequency for the repeater.

Offset Direction

This item selects the offset direction for the repeater.

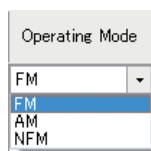
MODE

This item selects the operating mode.

When entering a receive frequency, this item automatically selects the operating mode that is most suitable for the frequency.

If the AM broadcast frequency is entered, the ADMS-7 programmer selects the broadcast band receiver, and the operating mode is set to AM automatically.

If the FM broadcast frequency is entered, the ADMS-7 programmer selects the broadcast band receiver, and the operating mode is set to FM automatically.



FM: FM mode, radio band. Use this mode for receiving the amateur radio, commercial radio etc.

AM: AM mode, radio band. Use this mode for receiving the Air band radio, etc.

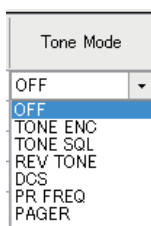
NFM: Narrow FM mode, radio band. Use this mode for narrow receiving the amateur radio, commercial radio etc.

Name

Enter the desired memory channel name (up to 8 digits).

Tone Mode

This item selects the Audio Squelch type.



CTCSS

This item selects the Tone Frequency of the Tone Squelch.

DCS

This item selects the DCS code of the DCS Squelch.

User CTCSS

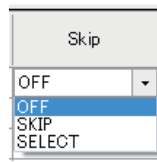
This item selects the Tone Frequency of the User Programmed Reverse Tone Squelch.

TX Power

This item selects the TX Power.

Skip

This item selects the Memory Scan channel-selection mode.



A screenshot of a software interface showing a dropdown menu titled 'Skip'. The menu is open, displaying three options: 'OFF', 'SKIP', and 'SELECT'. The 'OFF' option is currently selected and highlighted in blue.

OFF: All memory channels will be scanned.

SKIP: The scanner will "skip" the flagged channels during scanning.

ONLY: The scanner will only scan channels that are flagged.

STEP

This item sets the frequency step.

When a receive frequency is entered, the step that is most suitable for the frequency is automatically selected.

Clock Shift

Place a check mark to this item to shift the CPU clock frequency to move a spurious "birdie".

Usually, this item is set to "OFF".

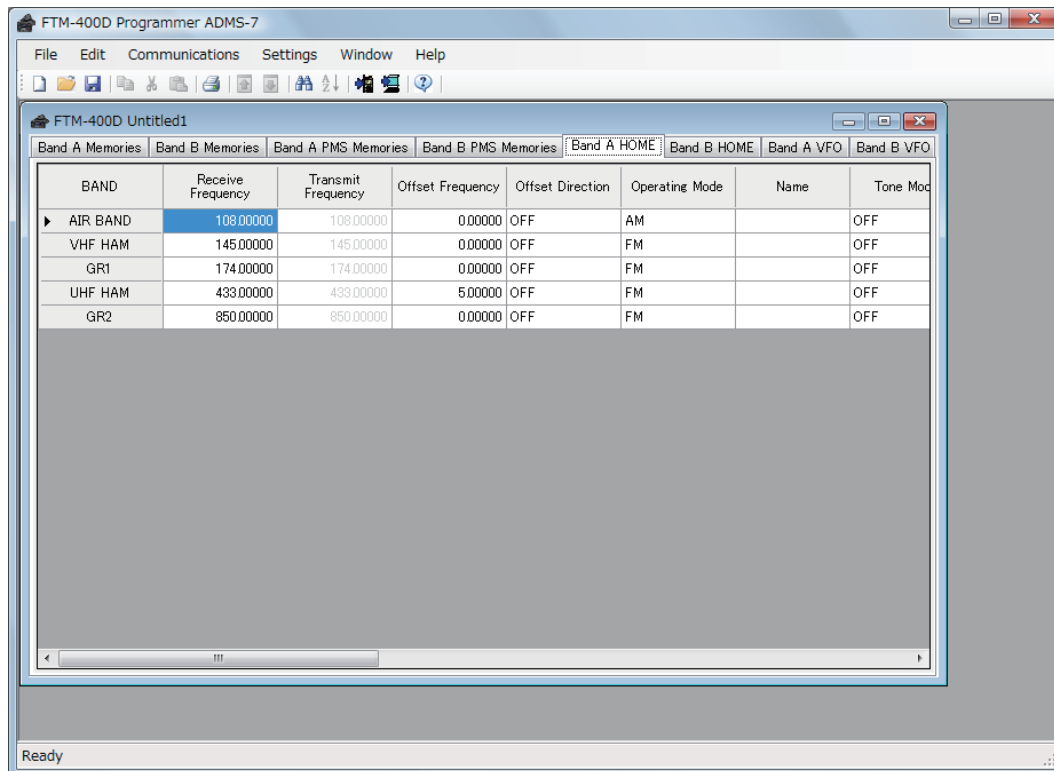
Comments

A comment may be appended (up to 255 characters) for additional reference.

HOME Channel

Edit the Home Channel configurations for each band on this page template.

Band A / Band B HOME

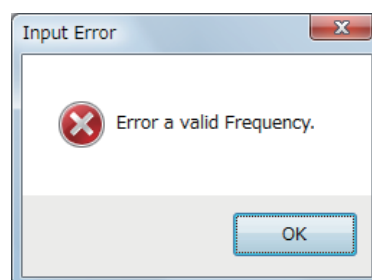


Frequency

Enter any desired changes into each Home Channel frequency. The FTM-400XDR/XDE/DR/DE default Frequencies are pre-entered into the ADMS-7 standard template.

A frequency which is out of range cannot be entered.

When the error pop-up window is opened, enter the correct frequency.



Offset Frequency

This item sets the repeater offset frequency.

Offset Direction

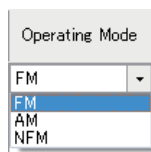
This item selects the repeater offset direction.

MODE

This item selects the operating mode.

When the receive frequency is entered, this item is automatically set to the operating mode that is most suitable for the frequency.

The operating mode may be changed manually, if desired.



FM: FM mode, radio band. Use this mode for receiving the amateur radio, commercial radio etc.

AM: AM mode, radio band. Use this mode for receiving the Air band radio, etc.

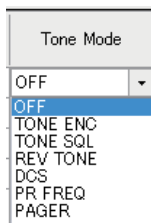
NFM: Narrow FM mode, radio band. Use this mode for receiving the narrow band amateur and commercial radio etc.

Name

Enter the desired memory channel name (up to 8 digits).

Tone Mode

This item selects the Audio Squelch type.



CTCSS Frequency

Select the Tone Frequency of the TSQ mode.

DCS

Select the DCS code of the DCS mode.

User CTCSS

Select the Tone Frequency of the User Programmed Reverse Tone Squelch.

The User Programmed Reverse Tone Squelch mutes the receiver when a signal containing a CTCSS tone that matches the pre-programmed Tone Frequency is received.

TX Power

This item selects the TX Power.

Step

This item sets the frequency step.

When a receive frequency is entered, the step that is most suitable for the frequency is automatically selected.

Clock Shift

Place a check mark to this item to shift the CPU clock frequency to move a spurious "birdie".

Usually, this item is set to "OFF".

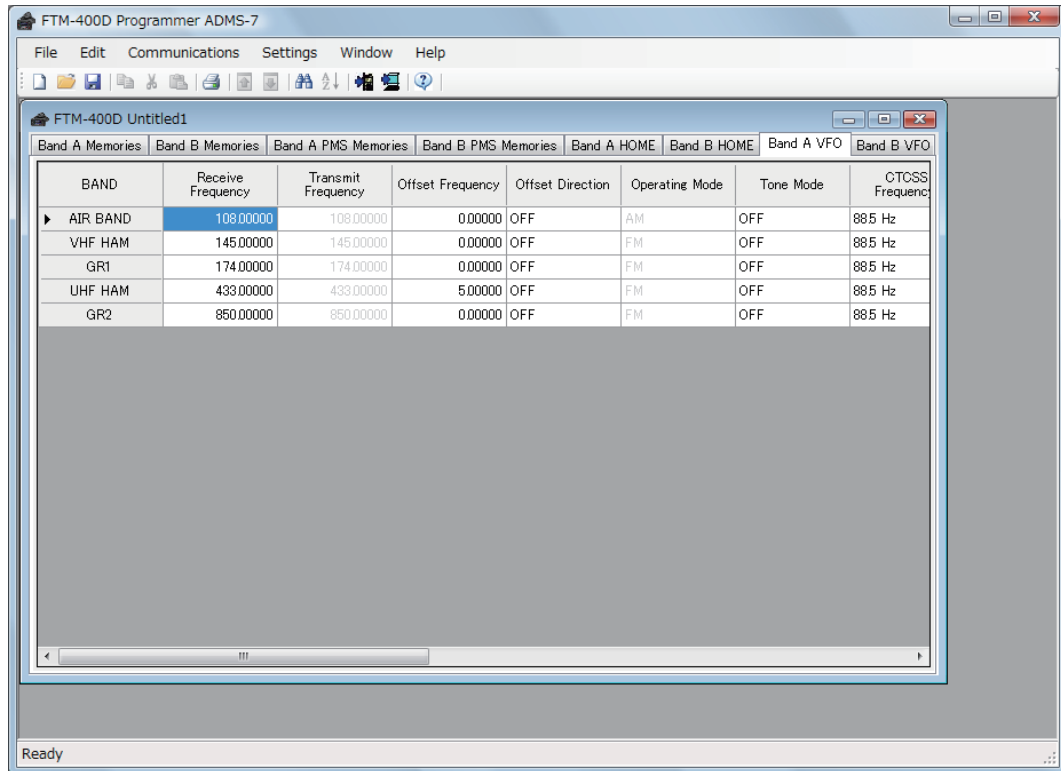
Comments

A comment may be appended (up to 255 characters) for additional reference.

VFO

Edit the VFO configurations for each band on this page template.

Band A / Band B VFO

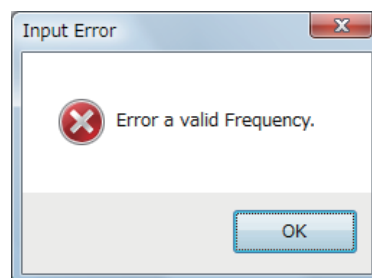


Frequency

Enter the Band A VFO frequencies (upper section) and Band B VFO frequencies (lower section) for each band. The FTM-400XDR/XDE/DR/DE, Band A and Band B VFO default frequencies are set in the standard templates of the ADMS-7 programmer.

A frequency which is out of range cannot be entered.

When the error pop-up window is opened, enter the correct frequency.



Offset Frequency

This item sets the repeater transmit offset frequency.

Offset Direction

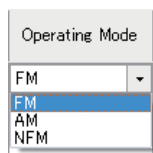
This item selects the repeater transmit frequency offset direction.

MODE

This item selects the operating mode.

When the receive frequency is entered, this item is automatically set to the operating mode that is most suitable for the frequency.

The operating mode may be changed manually, if desired.



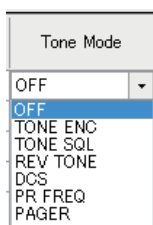
FM: FM mode, radio band. Use this mode for receiving the amateur radio, commercial radio etc.

AM: AM mode, radio band. Use this mode for receiving the Air band radio, etc.

NFM: Narrow FM mode, radio band. Use this mode for narrow receiving the amateur radio, commercial radio etc.

Tone Mode

Select the Audio Squelch type.



The Audio Squelch type cannot be set on the FM Broadcast or AM Broadcast bands.

CTCSS Frequency

Selects the Tone Frequency of the TSQ mode.

The CTCSS frequency cannot be set on the FM Broadcast or AM Broadcast bands.

DCS

Selects the DCS code of the DCS mode.

The DCS code cannot be set on the FM Broadcast or AM Broadcast bands.

User CTCSS

Select the Tone Frequency of the User Programmed Reverse Tone Squelch.

The User Programmed Reverse Tone Squelch mutes the receiver when it receives a signal containing a tone matching the previously programmed Reverse Tone Squelch.

TX Power

This item selects the TX Power.

Step

This item sets the frequency step.

When a receive frequency is entered, the step that is most suitable for the frequency is automatically selected.

Clock Shift

Place a check mark in this item to shift the CPU clock frequency to move a spurious "birdie".

Usually, this item is set to "OFF".

Comments

A comment may be appended (up to 255 characters) for additional reference.

Troubleshooting

The FTM-400XDR/XDE/DR/DE cannot receive or transmit data to the computer.

The Data transfer does not start.

- Verify that the programming cable is correctly connected to the FTM-400XDR/XDE/DR/DE data port and to the Computer.
- Does the power cable of FTM-400XDR/XDE/DR/DE connect correctly? Connect the power cable correctly.
- Is the computer COM Port setting correct? Set the COM Port correctly.

The data transmission has stopped before completion.

- Disconnecting the connection cable or poor contact of the connection cable. Confirm the cable connection and try again.
- Is the 13.8 V DC Supply voltage low? Check the Power supply, wiring, fuses and connections.

The data import/export is not successful.

- Adjust the number of the rows of CSV file.
- Use the designated letter for the character string
- Adjust the template files.
- * Use the period (.) for the frequency data.

Contact YAESU Technical Support

For the latest information about YAESU products visit <http://www.yaesu.com>

For Technical Support or Customer Service call, (714)827-7600 between 8AM – 5PM PST



Copyright 2017

YAESU MUSEN CO., LTD.

All rights reserved.

No portion of this manual may be
reproduced without the permission of
YAESU MUSEN CO., LTD.

YAESU MUSEN CO., LTD.

Tennozu Parkside Building

2-5-8 Higashi-Shinagawa, Shinagawa-ku, Tokyo 140-0002 Japan

YAESU USA

6125 Phyllis Drive, Cypress, CA 90630, U.S.A.

YAESU UK

Unit 12, Sun Valley Business Park, Winnall Close

Winchester, Hampshire, SO23 0LB, U.K.