

SCU-20 PC Connection Cable Driver Installation Manual

Installing the SCU-20 PC Connection Cable driver software on a computer makes possible data transmission and updating the transceiver firmware.

Please read this entire manual carefully. If you agree to the content of this manual, download and install the SCU-20 PC Connection Cable driver.

Operating Environment

Supported Operating Systems

- Microsoft® Windows® 10
- Microsoft® Windows® 8.1

Installing the SCU-20 Driver

Caution: Do not connect the transceiver to the computer via the SCU-20 PC Connection Cable until the driver installation process has been completed. Connecting the SCU-20 to the computer before installation has been completed may result in the wrong driver being installed, preventing proper operation.

Install the driver, which matches to the operating system in use.

Driver Installation	2
When the Driver Installation Fails	3
How to Uninstall the PC-Connection Cable Driver	4

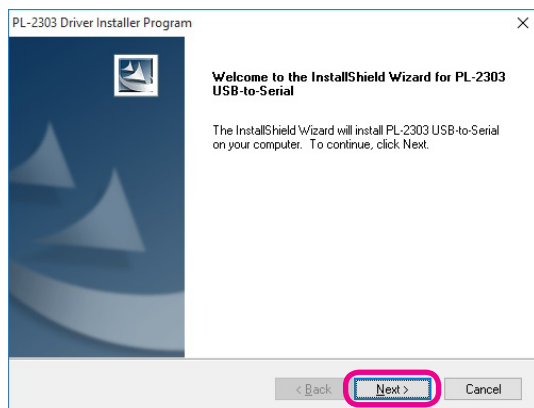
NOTE: This reference manual was created using the Windows 10® operating system. Operations and screen examples may vary based on another operating system.

Driver Installation

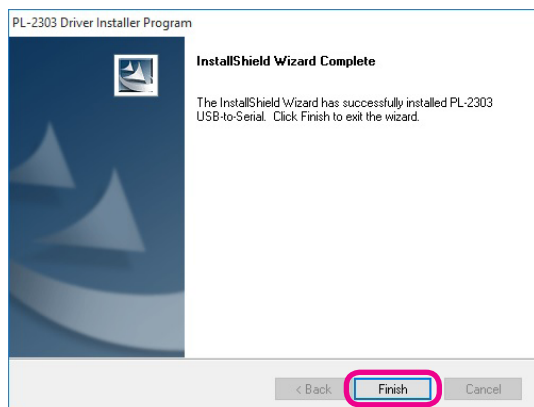
Before installing the driver, make sure that the SCU-20 PC Connection Cable is disconnected from the computer.

Installation

1. Start up the computer as an “Administrator” user.
2. Double check and ensure the SCU-20 PC Connection Cable is **not connected** to the computer.
3. Unzip the downloaded (SCU-20_PC_Connection_Cable_Driver.zip) file.
4. Double click the left mouse button on “**PL2303_Prolific_DriverInstaller_v1.8.0.exe**”.
5. When the “User Account Control” dialog box opens, click “**Yes**”.
6. The dialog box, which is shown below, will open. Click “**Next**”, to initiate the installation of the driver.
8. Connect the SCU-20 PC Connection Cable to the USB jack on the computer. The SCU-20 PC Connection Cable will be recognized automatically.

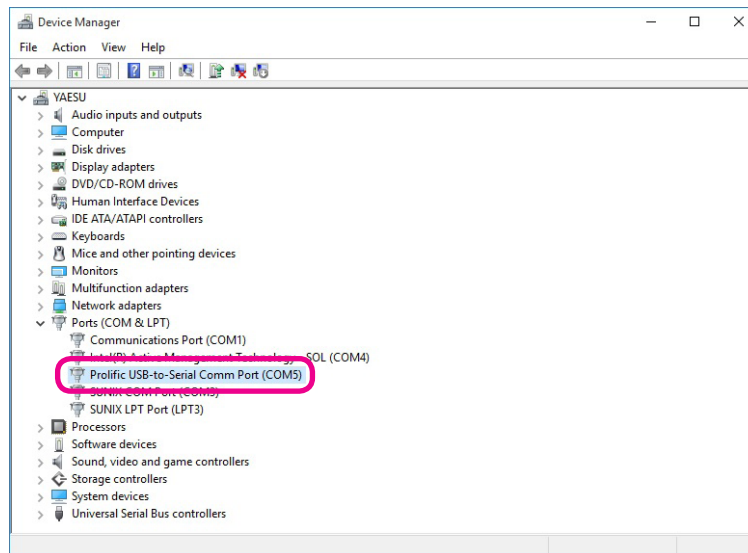
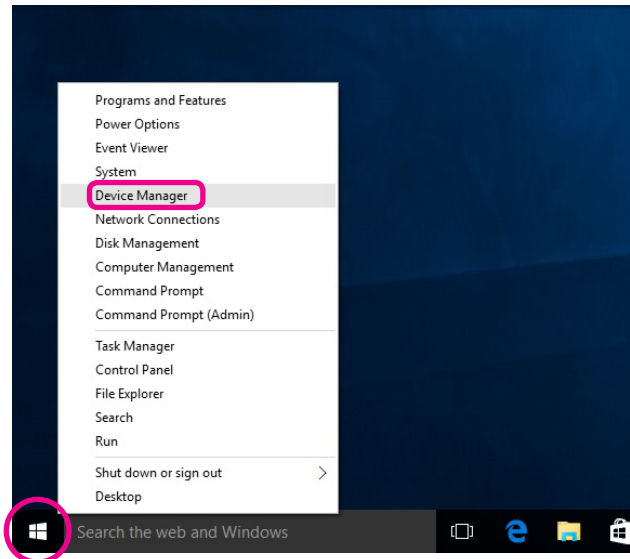


7. When the installation is finished, the dialog box shown below will open. Click “**Finish**”, to complete the installation of the driver.



Confirmation

1. Right click “Start”.
2. Click “Device Manager”.
3. When the “User Account Control” dialog box opens, click “Yes”.
4. Open the “Device Manager” dialog box, then double click “Ports (COM&LPT)”.
5. When the “Prolific USB-to-Serial Comm Port (COM X)” (X: Comm Port Number) is displayed, the SCU-20 PC Connection Cable is functioning normally.



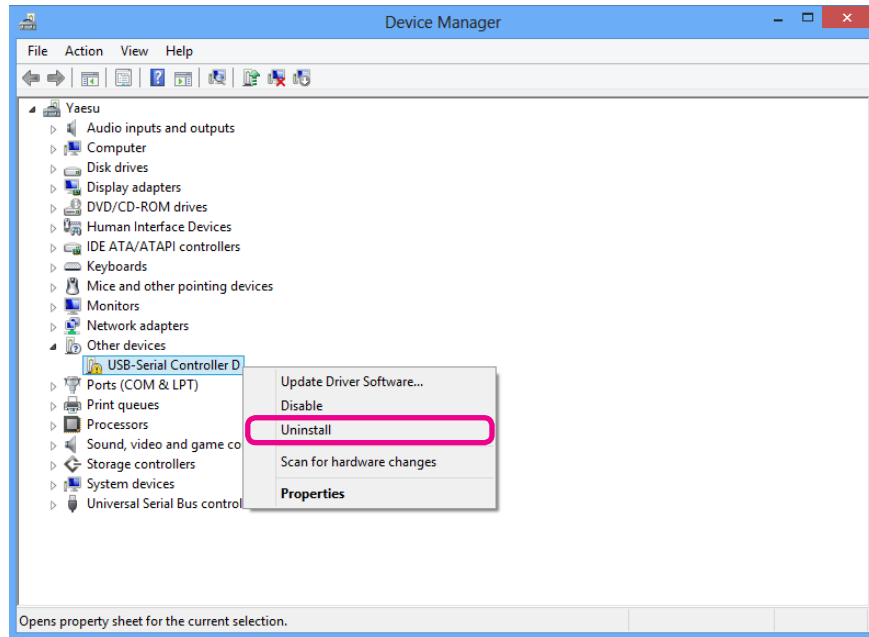
When the Driver Installation Fails

The driver installation may fail when:

- The installation wizard is canceled during the installation.
- The SCU-20 PC Connection Cable is connected to the computer before installing the driver.

When the installation of the driver fails:

1. Open the “**Device Manager**” dialog box, as described in the “**Confirmation**” instruction section of each Operating System.
2. Click “device” which is appended to the “!” or “?” icon, then right click “Uninstall”, to uninstall the driver.
3. Retry the installation of the driver.

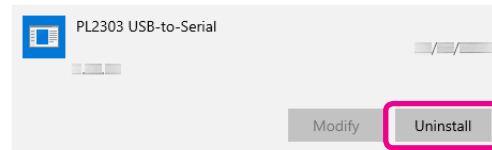


How to Uninstall the PC-Connection Cable Driver

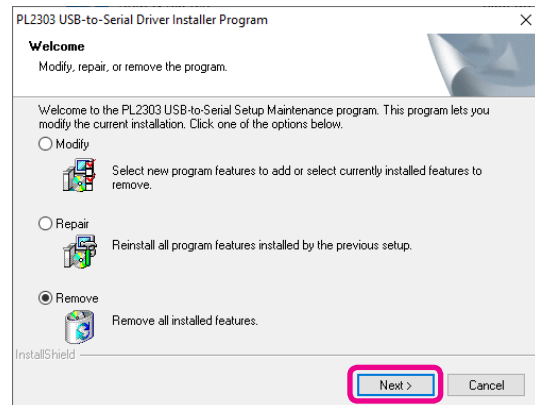
If you wish to uninstall the SCU-20 PC Connection Cable driver, perform the following procedures:

1. Disconnect the SCU-20 PC Connection Cable from the computer.
2. Click **"Start"** and then click **"Settings"**.
3. Click **"Apps"**.

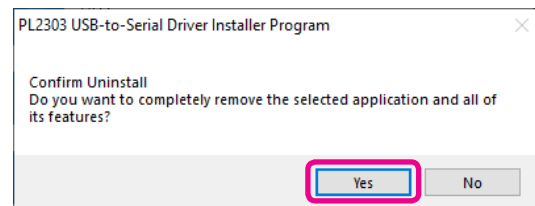
Apps & features



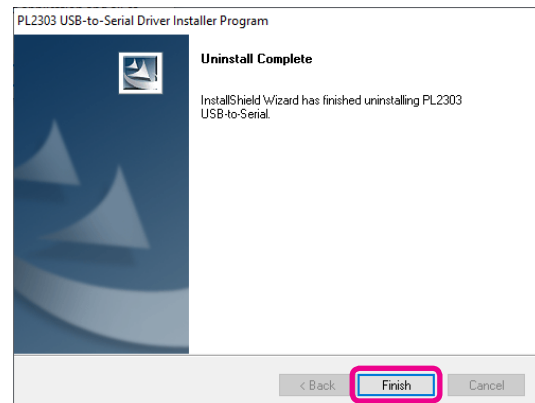
3. Click **"Uninstall"**.
The dialog box shown to the right will open.



4. Click **"Next"**.
The confirmation screen will appear.
5. Click **"Yes"** to uninstall the SCU-20 PC Connection Cable driver.



5. When uninstall is finished, the dialog box shown to the right will open. Click the left mouse button on **"Finish"** to complete the removal of the SCU-20 PC Connection Cable driver.





Copyright 2020
YAESU MUSEN CO., LTD.
All rights reserved.

No portion of this manual may be
reproduced without the permission of
YAESU MUSEN CO., LTD.

YAESU MUSEN CO., LTD.

Tennozu Parkside Building
2-5-8 Higashi-Shinagawa, Shinagawa-ku, Tokyo 140-0002 Japan

YAESU USA

6125 Phyllis Drive, Cypress, CA 90630, U.S.A.

YAESU UK

Unit 12, Sun Valley Business Park, Winnall Close
Winchester, Hampshire, SO23 0LB, U.K.