

FT-65

Memory Programmer

Operation Manual

Contents




Introduction.....	2	View menu.....	17
About this manual	2	① Tool Bar	17
Important Notes	2	② Status Bar	17
System Requirements.....	2	Help menu	17
Operating system (OS)	2	① About FT_65.....	17
CPU	2	Switching buttons	18
RAM (system memory)	2	① Normal	18
HDD(Hard Disk)	3	② Limit.....	18
Necessary PC peripheral interfaces	3	③ VFO-A	18
Cables.....	3	④ VFO-B	18
Trademark information	3	⑤ Home	18
Setup workflow	3	⑥ P	18
Set up the Memory Programmer	4	Setting the Items.....	19
Installing the SCU-35 driver	4	① RX Frequency	19
Confirmation whether the SCU-35 driver is in-		② Offset Frequency	19
stalled	5	③ Auto Offset.....	19
When the Driver Installation Fails.....	6	④ Offset Direction	19
How to Uninstall the Programming Cable Driv-		⑤ CTCSS Decode	19
er	7	⑥ CTCSS Encode	19
Installing the Memory Programmer	8	⑦ DCS Decode.....	19
Preparation	8	⑧ DCS Encode.....	19
How to Uninstall the Memory Programmer.....	9	⑨ Channel Name	19
Basic Operation	10	⑩ TX Power	19
1 Activating the Memory Programmer.....	10	⑪ Scan.....	20
2 Connecting the FT-65 to the computer.....	10	⑫ WN	20
3 Set the Comm Port Number of the SCU-35		⑬ Step.....	20
driver	11	⑭ SQL Type.....	20
4 Read the settings from the transceiver.....	11	⑮ Bank.....	20
5 Edit the transceiver settings on the Memory		Troubleshooting	21
Programmer	12	FT-65 cannot receive or transmit data to the	
6 Write the settings to the transceiver	12	computer.	21
About Memory Programmer.....	13	The Data transfer does not start.	21
Initial screen	13	The data transmission has stopped before	
Menu Bar	14	completion.	21
File menu.....	14	Contact YAESU Technical Support	21
① New	14		
② Open	14		
③ Save	14		
④ Save as	14		
⑤ Exit.....	14		
Edit menu	15		
① CH. Edit	15		
② Function Setup	15		
③ Bank Channel	15		
Set menu	16		
① Set COM	16		
② Set Language.....	16		
③ Set Initialization	16		
Program menu	16		
① Read From Radio.....	16		
② Write To Radio	16		

Introduction

FT-65 Memory Programmer software uses a Personal Computer to quickly enter and save the **FT-65** memory channel frequencies and data. Also the many menu settings may be adapted for individual operating preferences. All of the information is saved, and then with the use of the SCU-35 programming cable and **FT-65** Memory programmer software, it may be downloaded (cloned) to the **FT-65** transceiver.

About this manual

This manual contains symbols and conventions to call attention to important information.

Symbols	Description
	This icon indicates cautions and alerts the user should be aware of.
	This icon indicates helpful notes, tips and information.
	This icon indicates other pages containing relevant information.

Important Notes

Before downloading this software, please read the “Important Notes” carefully. Downloading or installing this software will be taken as indicating your agreement with the contents of the “Important Notes”.

- ☐ All responsibility for the usage of this software lies with the customer. We cannot be held responsible in any way for any damages or losses which may be incurred by the customer as a result of using this software.
- ☐ Copyrights and all other intellectual property rights for the software, as well as the software manual, are the property of YAESU MUSEN CO., LTD.
- ☐ The revision, modification, reverse engineering, and decompiling of this software is prohibited. Redistribution, transfer, and resale of downloaded files are also prohibited.
- ☐ Downloaded files may only be used for personal use.

System Requirements

Operating system (OS)

Any one of the following operating system environments.

Microsoft® Windows® 10 (32 bit/64 bit)

Microsoft® Windows® 8.1 (32 bit/64 bit)

Microsoft® Windows® 7 (32 bit/64 bit)

CPU

The performance of the CPU must be able to satisfy the operating system requirements.

RAM (system memory)

The capacity of the RAM (system memory) must be more than sufficient to satisfy the operating system requirements.

Introduction

HDD(Hard Disk)

The capacity of the HDD must be more than sufficient to satisfy the operating system requirements.

In addition to the memory space required to run the operating system, about 50 MB or more of additional memory space is required to run the program.

Necessary PC peripheral interfaces

USB interface (USB Port) or Serial Port (RS-232C)

Cables

Programming cable SCU-35



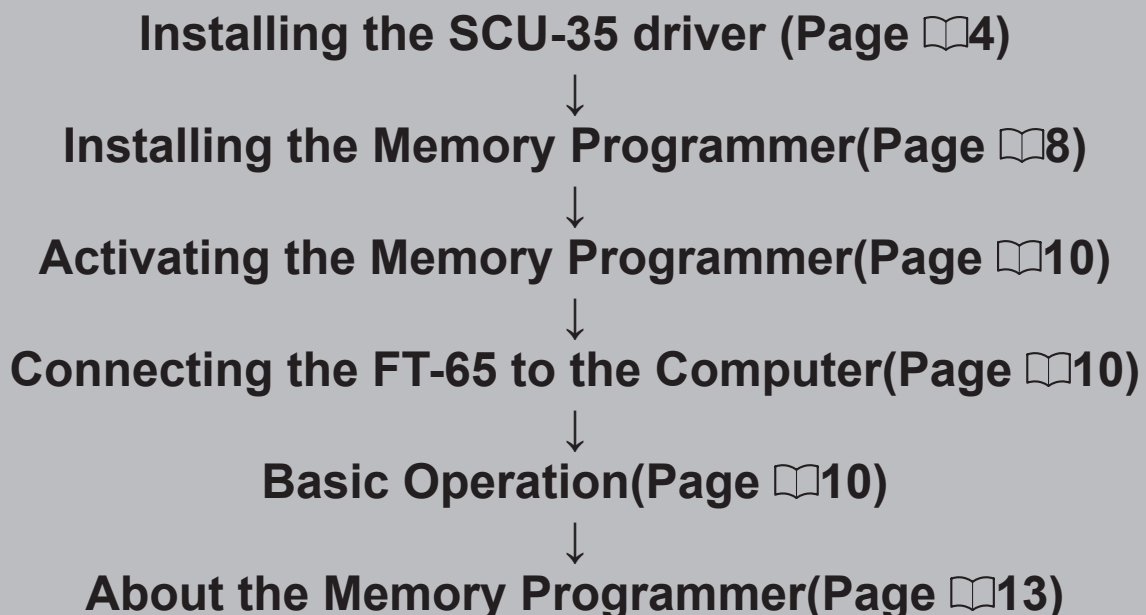
When using the SCU-35 PC connection cable, install the designated driver on the computer.

Trademark information

Microsoft®, Windows®, Windows® 7, Windows® 8.1, Windows® 10 are registered trademarks of Microsoft Corporation in the United States and other countries.

Setup workflow

When using the memory programmer software for the first time, the setup workflow are below.



Set up the Memory Programmer

Installing the SCU-35 driver

The following procedures are described for the Windows® 7 OS.

When using the SCU-35 Programming Cable, install the SCU-35 driver software before using the Memory Programmer. Go to the following website to download and install the driver software for the SCU-35 (<http://www.yaesu.com/>).

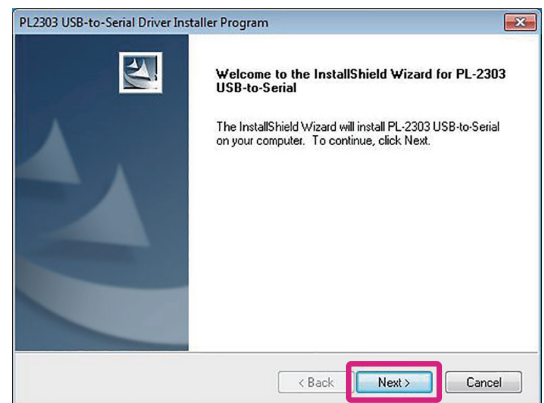


Before installing the driver, make sure that the SCU-35 Programming Cable is disconnected from the computer.

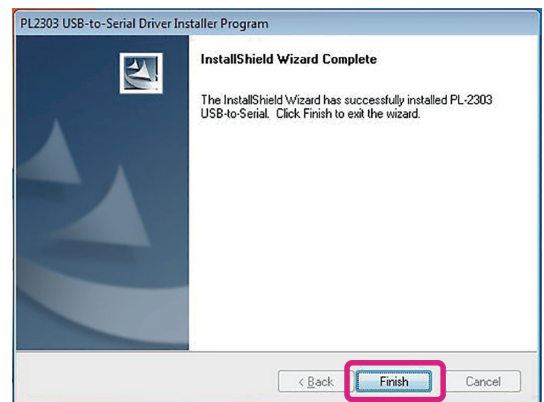
1. Start up the computer as an “Administrator” user.
2. Double check and ensure the SCU-35 Programming Cable is not connected to the computer.
3. Unzip the downloaded (PL2303_Prolific_DriverInstaller_v****.zip) file.
4. Double click the left mouse button on [PL2303_Prolific_DriverInstaller_v****.exe].

When the [User Account Control] dialog box opens, click the left mouse button on [Yes].

5. The dialog box, which is shown right, will open. Click the left mouse button on [Next], to initiate the installation of the driver.



6. When the installation is finished, the dialog box shown below will open. Click the left mouse button on [Finish], to complete the installation of the driver.



7. Connect the SCU-35 Programming Cable to the USB jack on the computer.
The SCU-35 Programming Cable will be recognized automatically.
To confirm wheather the SCU-35 driver is installed correctly, proceed to next page.

Set up the Memory Programmer

Confirmation whether the SCU-35 driver is installed

1. Click the left mouse button on the [Start] button in the tool bar, then click the right mouse button on the [Computer].
2. Click the left mouse button on the [Property], then click the left mouse button on [Device Manager].
3. When the [User Account Control] dialog box opens, click the left mouse button on [Yes].
4. Open the [Device Manager] dialog box, then double click the left mouse button on [Ports (COM&LPT)].
 - When the “Prolific USB-to-Serial Comm Port (COM X)” (X: Comm Port Number) is displayed, the SCU-35 Programming Cable is functioning normally.
 - To connect the transceiver to the PC, keep the Comm Port Number in mind.

Set up the Memory Programmer

When the Driver Installation Fails

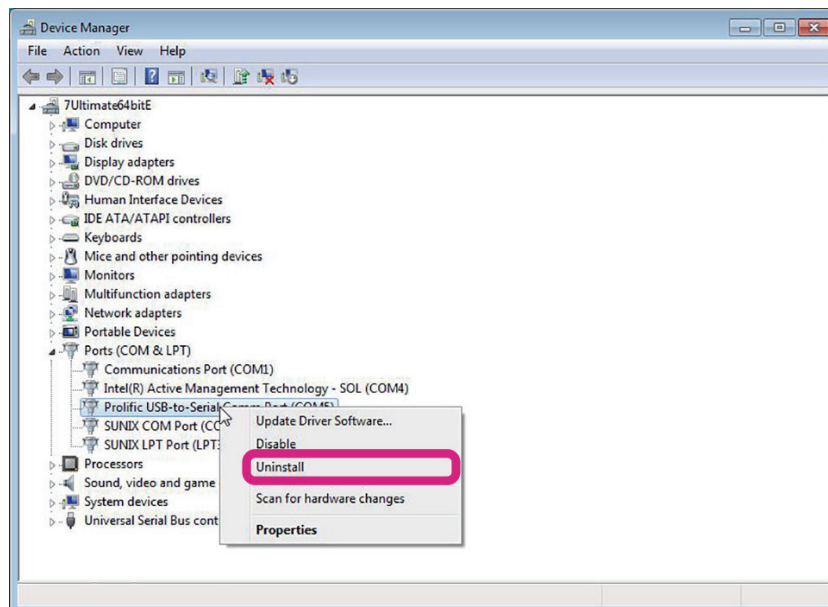
The driver installation may fail when:

The installation wizard is canceled during the installation.

The SCU-35 PC Programming Cable is connected to the computer before installing the driver.

When the installation of the driver fails:

1. Open the [Device Manager] dialog box, as described in the "Confirmation whether the SCU-35 driver is installed" instruction section
2. Click the left mouse button on the “device” which is appended to the “!” or “?” icon, then click the right mouse button on [Uninstall], to uninstall the driver.
3. Retry the installation of the driver.

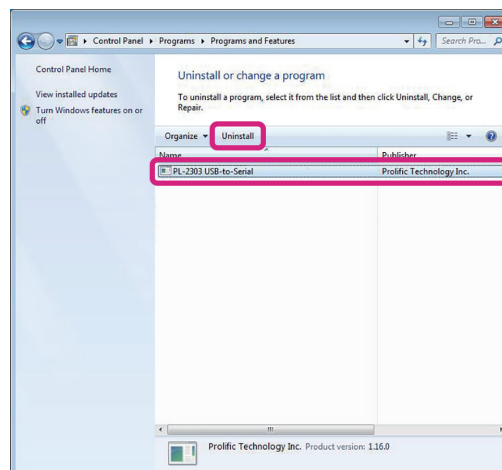


Set up the Memory Programmer

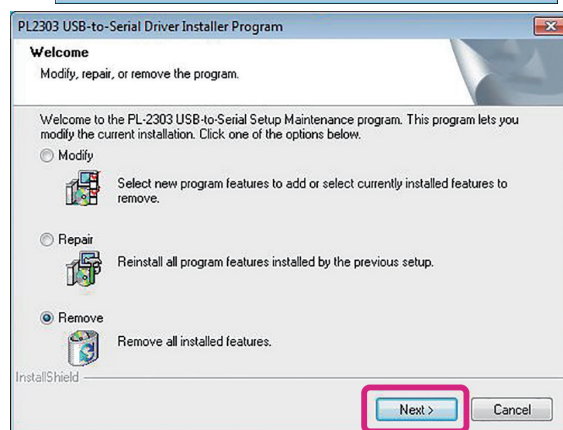
How to Uninstall the Programming Cable Driver

If you wish to uninstall the SCU-35 Programming Cable driver, perform the following procedures. The following procedures are described for the Windows® 7 OS.

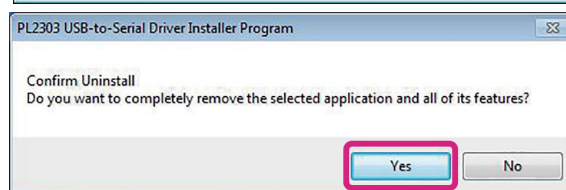
1. Disconnect the SCU-35 PC Connection Cable from the computer.
2. Click the left mouse button on [Start] → [Control Panel] → [Uninstall a program].
3. Click the left mouse button on “PL- 2303 USB-to-Serial”, then click the left mouse button on [Uninstall].



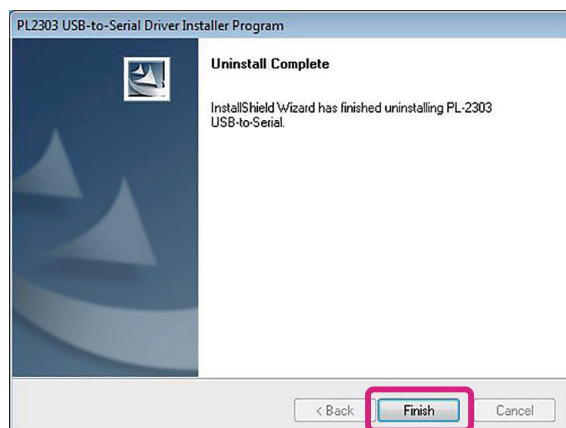
4. Click the left mouse button on [Next].



5. Click the left mouse button on [Yes] to uninstall the SCU-19 PC Connection Cable driver.



6. When uninstall is finished, the dialog box shown to the right will open. Click the left mouse button on [Finish] to complete the removal of the SCU-35 PC Connection Cable driver.



Set up the Memory Programmer

Installing the Memory Programmer

The following installing procedures are described for the Windows® 7 OS.

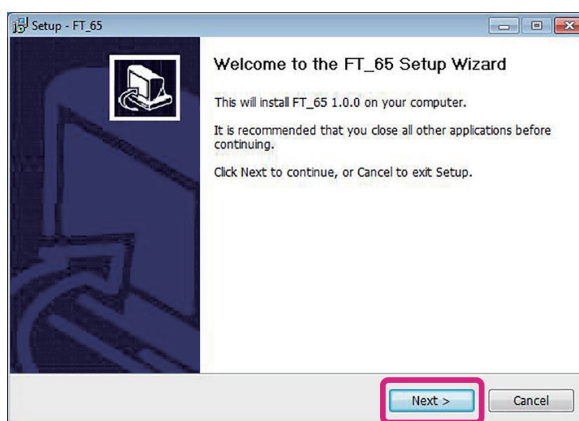
Preparation

Go to the following website to download and install the Memory Programmer software (<http://www.yaesu.com/>).

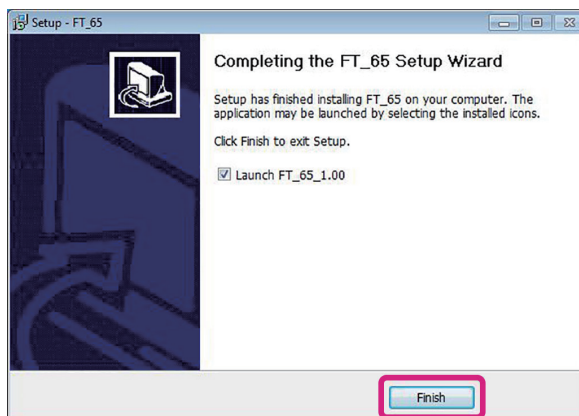
1. Start up the computer as an “Administrator” user.
2. Unzip the downloaded (FT-65_Setup.zip) file.
3. Double click the left mouse button on [FT-65_Setup.exe].

When the [User Account Control] dialog box opens, click the left mouse button on [Yes].

4. The dialog box shown to the right will open. Click the left mouse button on [Next], to initiate the installation of the memory programmer.



5. When uninstall is finished, the dialog box shown to the right will open. Click the left mouse button on [Finish] to complete the Memory Programmer.



Set up the Memory Programmer

How to Uninstall the Memory Programmer

The following installing procedures are described for the Windows® 7 OS.

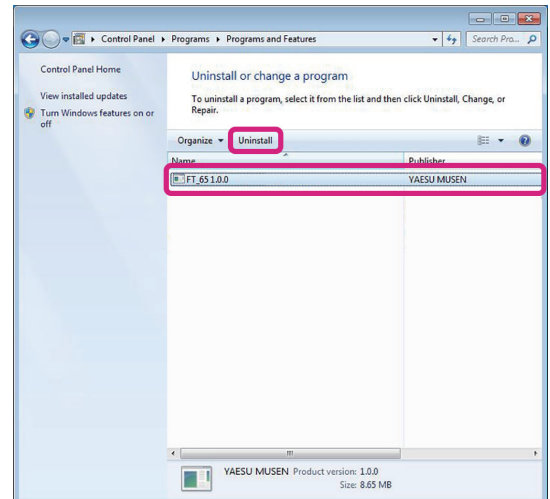
1. Disconnect the SCU-35 Programming Cable from the computer.
2. Click the left mouse button on [Start] ➡ [Control Panel] ➡ [Uninstall a program].



When [Uninstall a program] is not displayed, click the left mouse button on [Programs and Features].

3. Click on [FT-65 x.xx] and then click on [Uninstall].

When the [User Account Control] dialog box opens, click the left mouse button on [Yes].



Basic Operation

1 Activating the Memory Programmer

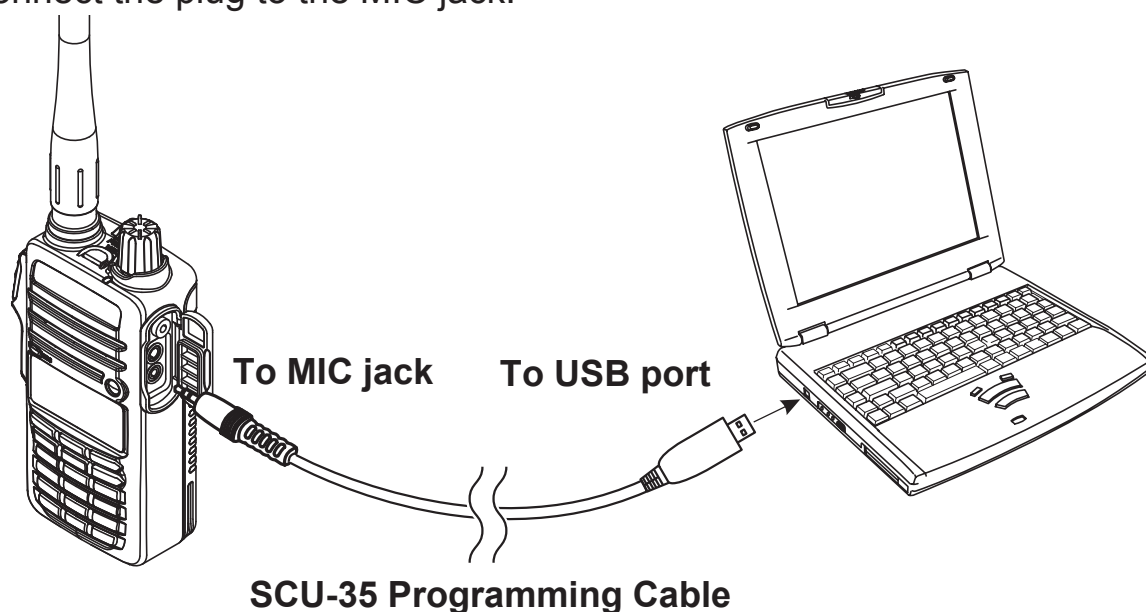
Double-click the [FT_65_X.XX] on the desktop to activate the Memory Programmer.

Exiting the Memory Programmer, click on [Exit] from [File] menu.



2 Connecting the FT-65 to the computer

1. Turn the transceiver **OFF**.
2. Connect the SCU-35 Programming Cable to the USB port on the computer and connect the plug to the MIC jack.



While transmitting and receiving the data, Do not disconnect the SCU-35 Programming cable.

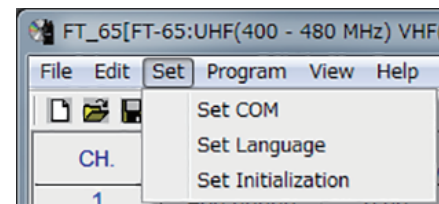
3. Turn the transceiver **ON**.

Basic Operation

3 Set the Comm Port Number of the SCU-35 driver

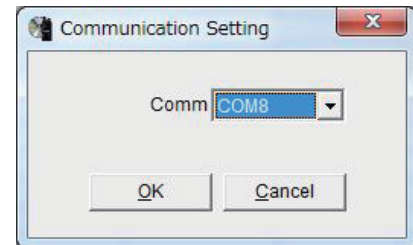
1. Click the left mouse button on the "Set COM" parameter in the "Set" menu.

The "Communication Setting" window will open.



2. Select the Comm Port Number, then click the left mouse button on "OK".

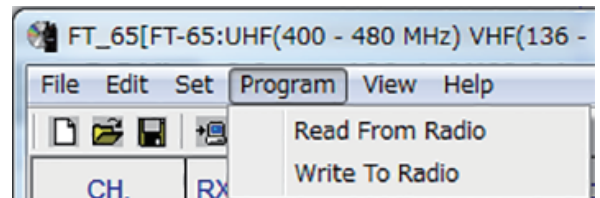
To confirm the Comm Port Number of the SCU-35 driver, see "Confirmation whether the SCU-35 driver is installed".



4 Read the settings from the transceiver

If writing the settings to the transceiver, see "6 Write the settings to the transceiver"

1. Click the left mouse button on the "Read from Radio" parameter in the "Program" menu.



2. The Confirmation popup window will open, then click "OK".
Completion percentage popup window will appear.



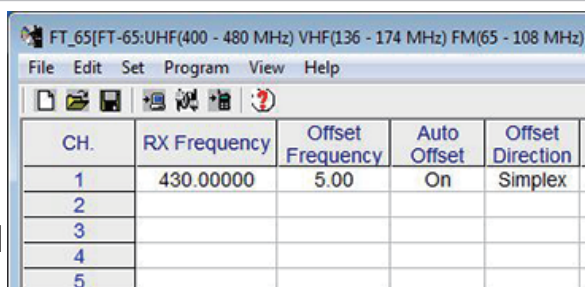
3. If the reading is successful, popup window will open, then click "OK".



Basic Operation

5 Edit the transceiver settings on the Memory Programmer

1. Double-click the left mouse button on the settings of the each channels.
2. Input the alphanumeric character or select the item of each settings.
The channels may be cut and copy-pasted to the desired channel.



CH.	RX Frequency	Offset Frequency	Auto Offset	Offset Direction
1	430.00000	5.00	On	Simplex
2				
3				
4				
5				



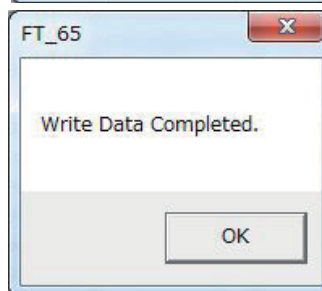
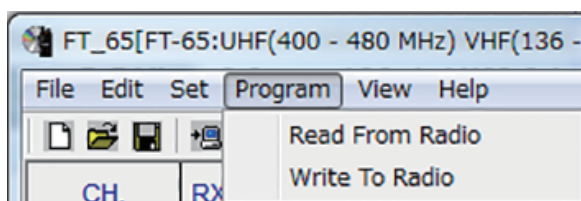
A part of the cells on the each columns may not be cut and copy-pasted.



For details on the contents of the each settings, see 13 page.

6 Write the settings to the transceiver

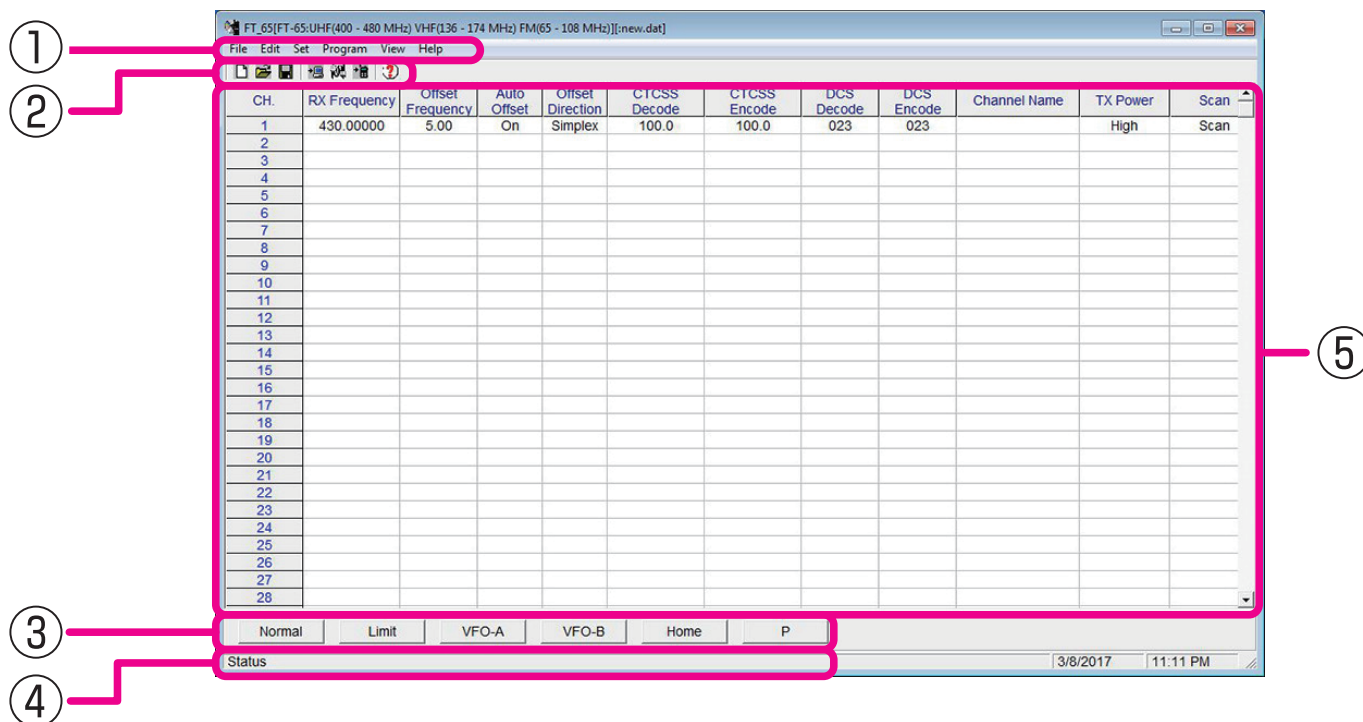
1. Click the left mouse button on the "Write to Radio" parameter in the "Program" menu.
2. The Confirmation popup window will open, then click "OK".
Completion percentage popup window will appear.
3. If the writing is successful, popup window will open, then click "OK".



About Memory Programmer

Initial screen

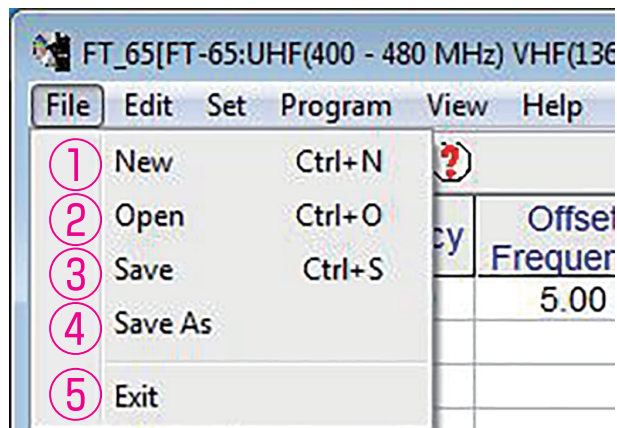
This is the initial screen displayed when starting the memory programmer.



	Name	Description	
①	Menu Bar	Click the menubar to read from the radio, write to radio, set language , set initialization, etc.	14
②	Tool Bar	Click the left mouse button on the "Toolbar" parameter in the "View" menu to display or hide the Toolbar, which includes buttons for some of the most common commands in the Memory Programmer. A check mark appears next to the "Toolbar" parameter when the Toolbar is displayed.	17
③	Switching Button	Click the left mouse button on each button (PMS, VFO-A, etc) to switch to display the each settings.	18
④	Status Bar	Click the left mouse button on the "Status Bar" parameter in the "Setting" menu to display or hide the Status Bar, which describes the action to be executed by the selected menu item or depressed toolbar button, and keyboard latch state. A check mark appears next to the "Status Bar" parameter when the Status Bar is displayed.	17
⑤	Set Value Input Screen	Double click the left mouse button on the each channel setting to input the setting values.	19

Menu Bar

File menu



① New

Open a new configuration file from the disk drive.

Click the left mouse button on the "New" parameter in the "File" menu to open the Memory Programmer default configuration file.

The default setting are set in the default configuration file.

② Open

Open a previously-saved configuration file from the disk.

Click the left mouse button on the "Open" parameter in the "File" menu, a pop-up window appears which shows all the saved files in the specified path.

③ Save

Save the programming session to the disk with the same name and directory.

Click the left mouse button on the "Save" parameter in the "File" menu, a caution message will appear. If you agree to over-write the current file, click the left mouse button on the [OK] box.

④ Save as

Save the programming session to the disk with a new name.

Click the left mouse button on the "Save As" parameter in the "File" menu, a pop-up window will appear which displays all the current files saved to the specified path.

To save the programming session with a new name, type the new file name in the bottom box, then click the left mouse button on the [OK] box.

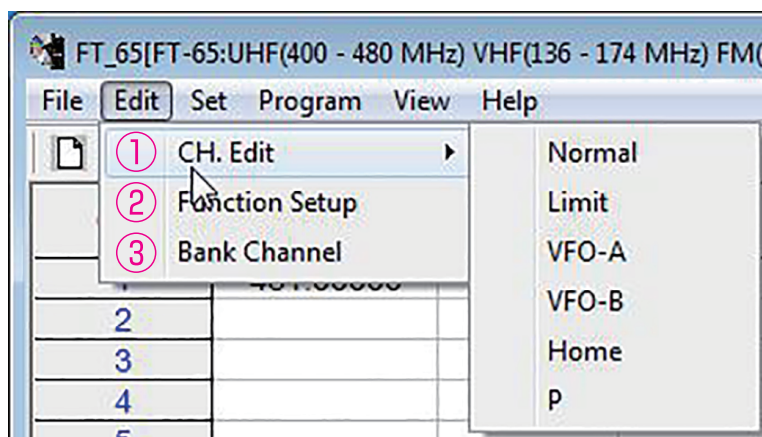
⑤ Exit

Exit the program and close the window.

If the present configuration has not been saved to disk, you will be asked to confirm whether or not you wish to save it.

Menu Bar

Edit menu

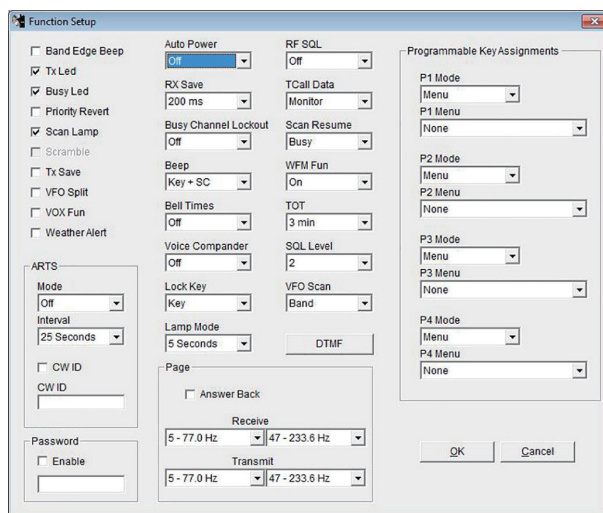


① CH. Edit

Click the left mouse button to switch the set value input screen. This key operates the same as switching button.

② Function Setup

This function may customize the various functions of the FT-65 according to your preferences. Click the left mouse button on the "Function Setup" parameter in the "Edit" menu to open the "Function Setup" window.

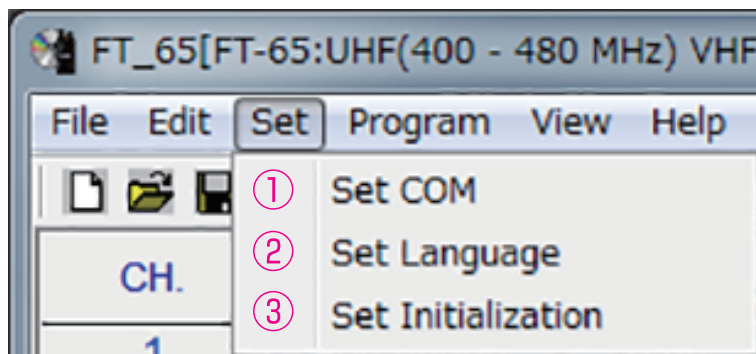


③ Bank Channel

A combination of up to 100 memory channels and preset memory channels can be registered to each of BANK 1 to BANK 10. When recalling a bank, only channels registered to the bank will be recalled.

Menu Bar

Set menu



① Set COM

Set the Comm Port number of the SCU-35 driver.

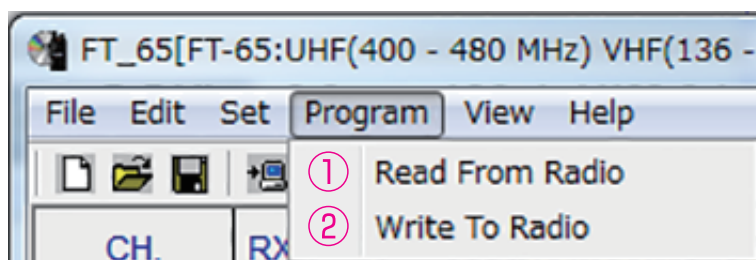
② Set Language

Change the display language (English (default setting) or China is selectable).

③ Set Initialization

Initialize the configuration content of the Memory Programmer.

Program menu



① Read From Radio

This command transfers the settings data of the FT-65 to the memory programmer.



Read data may be stored to the computer files, using the the “Save” or “Save as” commands in the “File” menu.

For details, see "4 Read the settings from the transceiver".

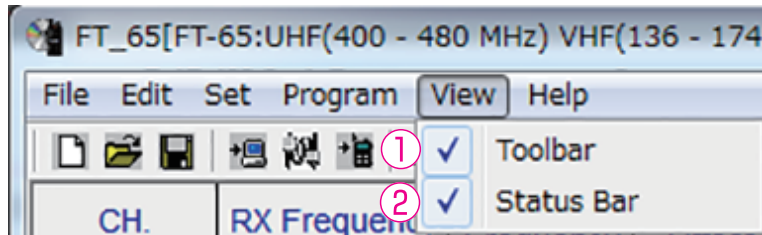
② Write To Radio

This command downloads the Memory Programmer data from the computer to the FT-65. Click the left mouse button on the “Write To Radio” parameter in the “Program” menu. The transmission procedure screen will open.

To load a previously created data file to the FT-65, click the “Open” parameter in the “File” menu, and open the desired file before performing the send data operation above.

Menu Bar

View menu



① Tool Bar

Click the left mouse button on the “Toolbar” parameter in the “View” menu to display or hide the Toolbar. The toolbar includes buttons for some of the most often used commands in the Memory programmer. A check mark appears next to the “Toolbar” parameter when the Toolbar is displayed.

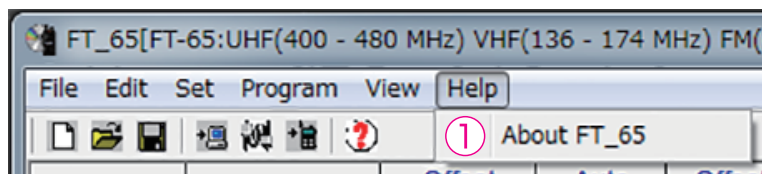


② Status Bar

Click the left mouse button on the “Status Bar” parameter in the “View” menu to display or hide the Status Bar. The “Status Bar” describes the action to be executed by the selected menu item, or the depressed toolbar button, and keyboard latch state. A check mark appears next to the “Status Bar” parameter when the Status Bar is displayed.



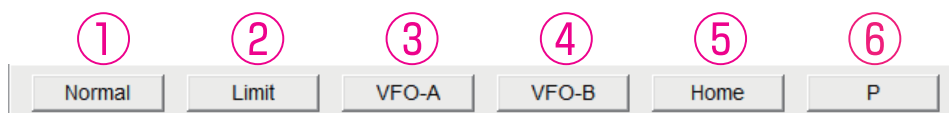
Help menu



① About FT_65

Click the left mouse button on the “About FT_65” parameter in the “View” menu to display the version and copyright of the Memory Programmer.

Switching buttons



① Normal

Click the left mouse button on the “Normal” button to change the normal operation settings.

② Limit

Click the left mouse button on the “Limit” button to change the PMS memory channel settings.

③ VFO-A

Click the left mouse button on the “VFO-A” button to change the default settings of VFO-A(UHF) or VFO-A(VHF).

④ VFO-B

Click the left mouse button on the “VFO-B” button to change the default settings of VFO-B(UHF), VFO-B(VHF) or VFO-B(FM).

⑤ Home

Click the left mouse button on the “Home” button to change the Home channel default settings of the VFO-B(UHF), VFO-B(VHF) or VFO-B(FM).

⑥ P

Click the left mouse button on the “P” button to change the default settings of the P1-P4 keys of the FT-65.

Setting the Items

CH.	RX Frequency	Offset Frequency	Auto Offset	Offset Direction	CTCSS Decode	CTCSS Encode	DCS Decode	DCS Encode	Channel Name	TX Power
1	430.00000	5.00	On	Simplex	100.0	100.0	023	023		High
2										
3										
4										
5										

① RX Frequency

Enter the RX.

Enter the desired receive frequency.

② Offset Frequency

This item sets the offset frequency for the repeater.

③ Auto Offset

This item sets the auto offset frequency ON or OFF for the repeater.

④ Offset Direction

This item selects the offset direction for the repeater.

- Minus
The transmit frequency is shifted to the minus offset.
- Plus
The transmit frequency is shifted to the plus offset.
- Simplex
The transmit frequency is not shifted.

⑤ CTCSS Decode

To set the tone frequency on receiving.

⑥ CTCSS Encode

To set the tone frequency on transmitting.

⑦ DCS Decode

To set the DCS code on receiving.

⑧ DCS Encode

To set the DCS code on transmitting.

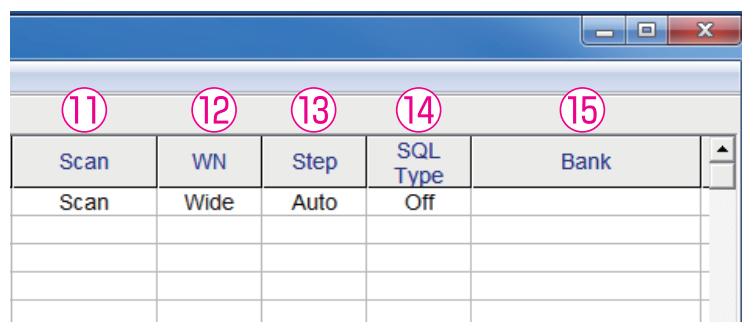
⑨ Channel Name

Enter the desired memory name (up to 8 digits).

⑩ TX Power

This item selects the TX Power.

Setting the Items



11	12	13	14	15
Scan	WN	Step	SQL Type	Bank
Scan	Wide	Auto	Off	

11 Scan

Select the scanning condition for receiving channels.

- Scan
Performs scanning according to the set mode basic setting - SCAN RESUME.
- Skip
Skips the designated memory channels during scanning.

12 WN

This item selects wide/narrow bandwidth on the FM mode.

- Narrow
Use for narrow bandwidth ham radio and advisory radio.
- Wide
Use for FM broadcasting.

13 Step

Sets the channel step for receiving channels. Normally, when a frequency is entered, the optimal channel step will be automatically set according to the frequency.

14 SQL Type

This item selects the Tone Encoder and/or Decoder mode.

15 Bank

A combination of up to 200 memory channels and preset memory channels can be registered to each of BANK 1 to BANK 10. In the column of each channel, tick the checkbox of the BANK to register the desired channel.

When recalling a bank, only channels registered to the bank will be recalled.

Troubleshooting

FT-65 cannot receive or transmit data to the computer.

The Data transfer does not start.

- Verify that the programming cable is correctly connected to the FT-65 data port and to the Computer.
- The battery of the FT-65 may be depleted.
Charge the battery or replace the battery with the new one.
- Is the computer COM Port setting correct?
Set the COM Port correctly.

The data transmission has stopped before completion.

- Disconnecting the connection cable or poor contact of the connection cable.
Confirm the cable connection and try again.
- The battery of the FT-65 may be depleted.
Charge the battery or replace the battery with the new one.

Contact YAESU Technical Support

For the latest information about YAESU products visit <http://www.yaesu.com>
For Technical Support or Customer Service call, (714)827-7600 between 8AM – 5PM PST



Copyright 2017
YAESU MUSEN CO., LTD.
All rights reserved.

No portion of this manual may be
reproduced without the permission of
YAESU MUSEN CO., LTD.

YAESU MUSEN CO., LTD.

Tennozu Parkside Building
2-5-8 Higashi-Shinagawa, Shinagawa-ku, Tokyo 140-0002 Japan

YAESU USA

6125 Phyllis Drive, Cypress, CA 90630, U.S.A.

YAESU UK

Unit 12, Sun Valley Business Park, Winnall Close
Winchester, Hampshire, SO23 0LB, U.K.